

# UT-021X Series

## 10/100Base - TX to 100Base - FX Mini Converter



UT-0214



UT-0216



### Product Introduction & Benefits

The UT-021X series is among LINK answers to expanding existing Fast Ethernet networks. The easy implementation and expansion of 100Base-TX/FX networks can be further assured with this converter. The converter is completely transparent when connected so the network performs exactly the way it did before - only now, it allows the co - existence of both copper and fiber mediums. Added flexibility is available with ST, SC, and WDM Simplex SC connectors. Extra distances are possible with the singlemode version delivering up to 100 km connectivity per transmitted segment.

The UT-021X allows the installation of fiber cabling anywhere within a Fast Ethernet network topology by directly connecting to existing devices.

Its compact modular design facilitates deployment in a narrow desktop location to save space.

### Ordering Information :

**UT-0214** : 10/100Base - TX to 100Base - FX Multimode, Media, Converter (ST Connector, 2km)

**UT-0216** : 10/100Base - TX to 100Base - FX Multimode, Media Converter (SC Connector, 2km)

**UT-0216 - SM30/60/100 (km)** : 10/100Base - TX to 100Base - FX Single Mode, Media Converter  
(SC Connector, 30/60/100 km)

**UT-0215TS - 20/40 (km)** : 10/100Base - TX to 100Base - FX Single Mode, Single Fiber, WDM Media Converter,  
Transmitter TX1310nm/RX1550nm, (SC Simplex, 20/40km)

**UT-0215RS - 20/40 (km)** : 10/100Base - TX to 100Base - FX Single Mode, Single Fiber, WDM Media Converter,  
Receiver TX1550nm/RX1310nm, (SC Simplex, 20/40km)

\* WDM Single Fiber Converters must be installed with Transmitter and Receiver in pairs

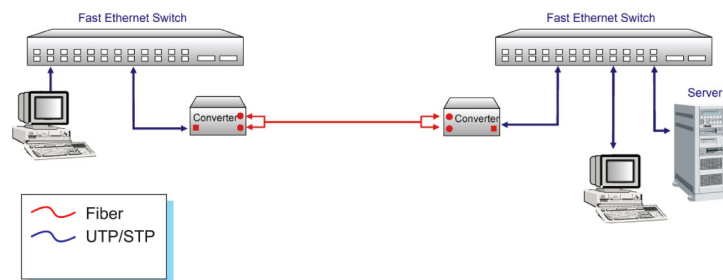
### Main Features :

- Complies with IEEE802.3 (10BASE-T), IEEE802.3u (100BASE-TX/FX)
- Extends distances ranging from 2km (multimode fiber) to 100km (singlemode fiber)
- NWay Auto-negotiation support on RJ-45 port
- Auto-Negotiation of duplex(HDX/FDX) on RJ-45 port
- Auto MDI/MDI-X support on RJ-45 port
- Status LED's for TX,FX LINK/ACT, POWER,100M to easily monitor network status
- External power supply
- FCC Class A & CE approved
- RoHS Compliant
- Included AC power adapter 220 VAC / 12 VDC, 1A



● <b>Standards :</b>	IEEE 802.3 (10BASE-T) IEEE 802.3u (100BASE-TX/FX)
● <b>Port :</b>	UTP Connector : 1 x RJ-45 type Fiber Optic Connector : ST or SC type (Only SC type for Single Mode)
● <b>Max Distance :</b>	UTP : 100 meters (Category5/5E or better) Fiber : 2km (Multimode) 30 - 120km (Single Mode) 20 - 40km (Single Mode / Single Fiber, WDM)
● <b>Emissions :</b>	FCC Part 15 of Class A & CE approved
● <b>Weight :</b>	180 g
● <b>Dimensions :</b>	86.6 x 59.4 x 23.4 mm (D x W x H)
● <b>Power Supply :</b>	AC 100 ~ 240V 47/63Hz Input, DC 12V 1A Output
● <b>Power Consumption :</b>	2.8W
● <b>Temperature :</b>	Operating : 0° C to 50° C Storage : -25° C to 70° C
● <b>Humidity :</b>	Operating : 10% to 80% RH Storage : 5% to 90% RH
● <b>Unit LED :</b>	PWR : Green - Illuminated for normal operation TX LNK/ACT : Green - Illuminated indicates receiving link pulses from compliant copper device and flashes when data being sent / received FX LNK/ACT : Green - Illuminated indicates receiving link pulses from compliant fiber device and flashes when data being sent / received 100 : Green - Illuminated when data packets are being transmitted at 100Mbps

## Applications :



The following illustrates typical applications for the UT-021X series. The actual distances will depend on several factors including the quality of cables used and the terminal equipment employed.