

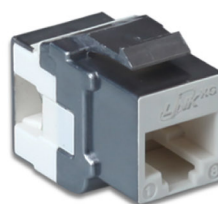
# Category 6A RJ45 Modular Jacks

LINK Category 6A RJ45 Modular Jacks are design to provide maximum flexibility and high performance for all 10G application. Modular Jack is a new design punch down terminate by suitable with 110 or Krone connecting tools and toolless also available. Cover cap also to protect the connector from dust. The terminal supplied with T568A and T568B wiring configuration on the edge is easy to read and prevent termination errors.

## SPECIFICATION



Standard	: ANSI/TIA-568-C.2 Category 6A, ISO/IEC-11801 Class EA, EN50173-1 and IEEE 802.3an (10GBase T)
Application	: 10G (XG), IEEE802.3, 10GBase-T, 1000Base-T, 10/100Base-TX, 4/16 Token ring, 155/622 and 1.2G ATM, POE, ISDN, VoIP and other
Product Type	: RJ45 Jack with cover caps
Wiring Pattern	: T568B/T568A Universal Color Pattern
Housing Material	: High Impact Flame Retardant Plastic
Housing Flammability Rating	: UL94V-0 ABS
Jack Contact	: Phosphor Bronze with over 50 micro-inches gold plating
Termination Block	: 90° & 180° 110 IDC , UL94V-0 Polycarbonate
Termination Material	: Phosphor Bronze with tin over 100 micro-inches nickel under plated
Durability	: 800 mating cycles (Modular Jack) 200 termination cycles (110 IDC Block)
Tool Free (Toolless Type)	: 180° IDC, UL94V-0 ABS
Shield Cover (Shield Type)	: Zinc Alloys, ZAMAC 3
Accept Wire Size	: 26AWG - 22AWG Solid & Stranded Wire
Approvals	: UL Listed E196947, 3P and ETL Certified CAT 6A
Certified	: Lead-free & RoHS Compliant by TUV



A



B



C

Part No.	Description	Type	Figure	Color
US-1022SL	CAT 6A RJ45 MODULAR JACK, Slim Type	Unshield	A	Metallic
US-1022TFAS	CAT 6A RJ45 Modular Jack, Superslim Tool Free, Auto Shutter	Unshield	B	Blue/Metallic
US-1034TFAS	Shield CAT 6A RJ45 Modular Jack, Tool Free, Auto Shutter	Shield	C	Metallic

## Category 6A In-Line Couplers

LINK In-Line Couplers provide a 180 Jack to Jack Splice. Couplers are available in eight position RJ45 Styles allow a simple operation with horizontal cables, which can easily be extended. Broken cables can be coupled without laying new complete cable segment. LINK In-Line Couplers are universal standards for all RJ45 Modular Plugs.

## SPECIFICATION

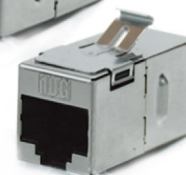
Standard	: ANSI/TIA-568-C.2 Category 6A, ISO/IEC-11801 Class EA, EN50173-1 and IEEE 802.3an (10GBase T)
Product Type	: RJ45 Jack to RJ45 Jack
Color	: White / Metallic with LINK logo
Certified	: Lead - free & RoHS Compliant by TUV



A



B



Part No.	Description	Type	Figure	Dimension (mm.)
US-4007	CAT 6A IN-LINE COUPLERS	Unshield	A	L 35 x W 16.3 x H 21
US-4007S	SHIELD CAT 6A IN-LINE COUPLERS	Shield	B	L 36 x W 17.8 x H 22