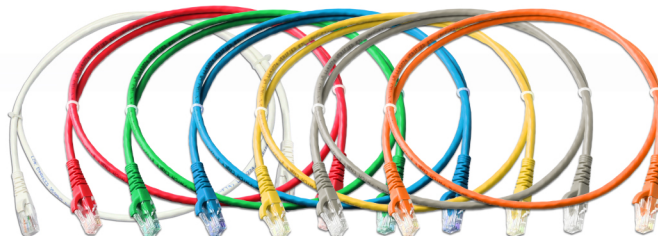


LINK Category 6 Ultra Patch Cord exceeds the proposed ANSI/TIA-568-C.2 requirement for Category 6 performance. LINK Category 6 Patch Cords are assembled by manufacturer with totally test to reach the standard by Q.C team. LINK Category 6 Patch Cord assembly of special high grade of CAT 6 Cable and high performance Plug & Boot. The Patch Cord is verify to give high flexibility and the best NEXT, Attenuation, ACR, Powersum etc.



## SPECIFICATION

Standard	: ANSI/TIA-568-C.2 Category 6, ISO/IEC-11801 Class E and EN50173-1
Application	: IEEE802.3, 1000Base-T, 10/100Base-TX, 4/16 Token ring, 155/622 and 1.2G ATM, POE, ISDN, VoIP and other
Cable	: Stranded wire flexible UTP category 6 performance
Color	: White, Red, Green, Blue, Yellow
Connector	: Category 6 RJ45 modular plug with over 50 micro-inches gold plating
Wire Size	: 24 AWG
Cover Boot	: Molding from manufacturer are designed to protect plugs and cables
Q.C.	: 100% factory assembly and testing
Approvals	: UL/cUL Listed E197771 and Intertek Channels Test
Certified	: Lead-free & RoHS Compliant by TUV



CAT6 RJ45 to RJ45 Patch Cord

Part No.	Description	Length (m.)
US-5101-X	CAT6 RJ45 to RJ45 PATCH CORD	1
US-5102-X	CAT6 RJ45 to RJ45 PATCH CORD	2
US-5103-X	CAT6 RJ45 to RJ45 PATCH CORD	3
US-5105-X	CAT6 RJ45 to RJ45 PATCH CORD	5
US-5110-X	CAT6 RJ45 to RJ45 PATCH CORD	10

X Color = 1 (White), 2 (Red), 3 (Green), 4 (Blue), 5 (Yellow), 6 (Black), 7 (Gray), 8 (Orange)

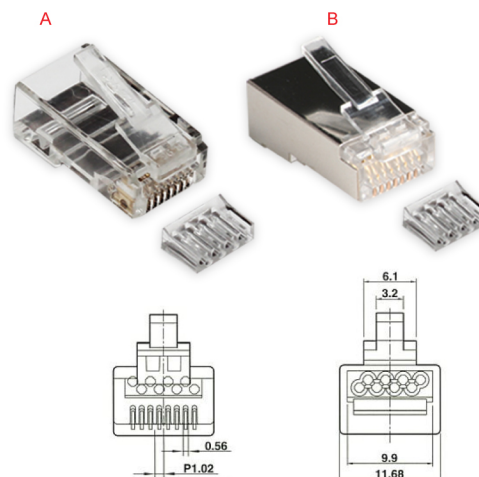
## Category 6 RJ45 Modular Plugs

LINK offer plugs in standard configurations to terminate modular cords for patching or working applications. Simplified termination due to a unique process. The mechanical of 2 layer and pre-insert bar optimizes performance and consistency by reduce untwist at plug. Shielded plug housing provides conductive patch for grounding.

## SPECIFICATION

Standard	: ANSI/TIA-568-C.2 Category 6, ISO/IEC-11801 Class E and EN50173-1
Housing	: Polycarbonate, UL94V-0 with LINK logo
Structure	: 2 Layer with pre-insert bar
Contacts	: Phosphor Bronze with over 50 micro-inches gold plating
Accept Wire	: 26AWG - 22AWG Solid & Stranded Wire
Certified	: Lead-free & RoHS Compliant by TUV

Part No.	Description	No. of Position	Figure
US-1002	CAT 6 RJ45 Modular Plug	8	A
US-1004	SHIELD CAT 6 RJ45 Modular Plug	8	B



## Category 6 Locking Plug Boots

LINK Plug Boots are designed to cover which protect RJ45 plugs and cables. It produces from special PVC with rubber for protect each of plug and easy to remove. It helps you solve your hard time finding the end of cable for maintenance or relocation or makes organizing your patch cord system quickly. It is suitable for both field terminated or patch cord maker and also for unshield and shield plug.

Locking Plug Boot

Part No.	Description	Packing
US-602X	CAT 6 Locking Plug Boot, OD 6.5 mm	10 Each/Pkg

X Color = 1 (Ivory), 2 (Red), 3 (Green), 4 (Blue), 5 (Yellow)



\* Revised 8/2014