



# 300Mbps Wireless N 4G LTE Router

Wi-Fi Where You Need It

TL-MR6400



**4G** 4G(TDD&FDD)/3G  
Compatible

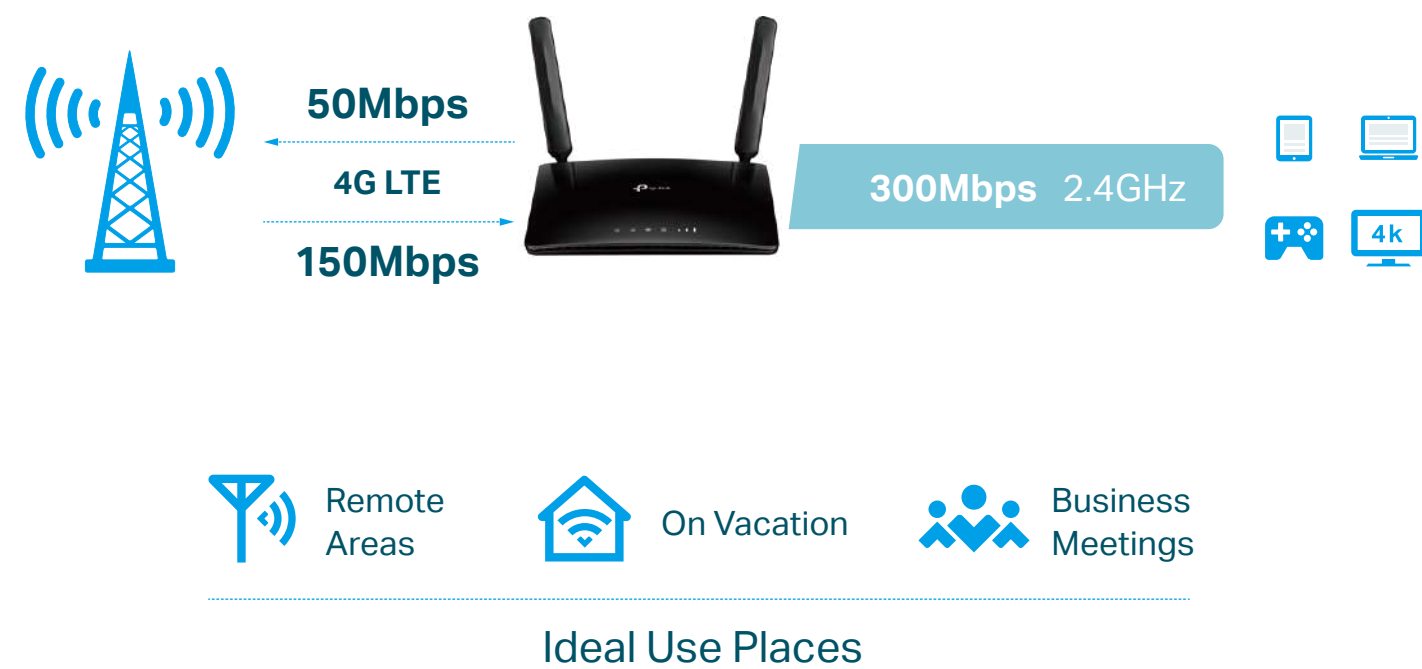
**300Mbps**  
Wireless Speed

**Qualcomm Inside** for  
Better Reliability

# Highlights

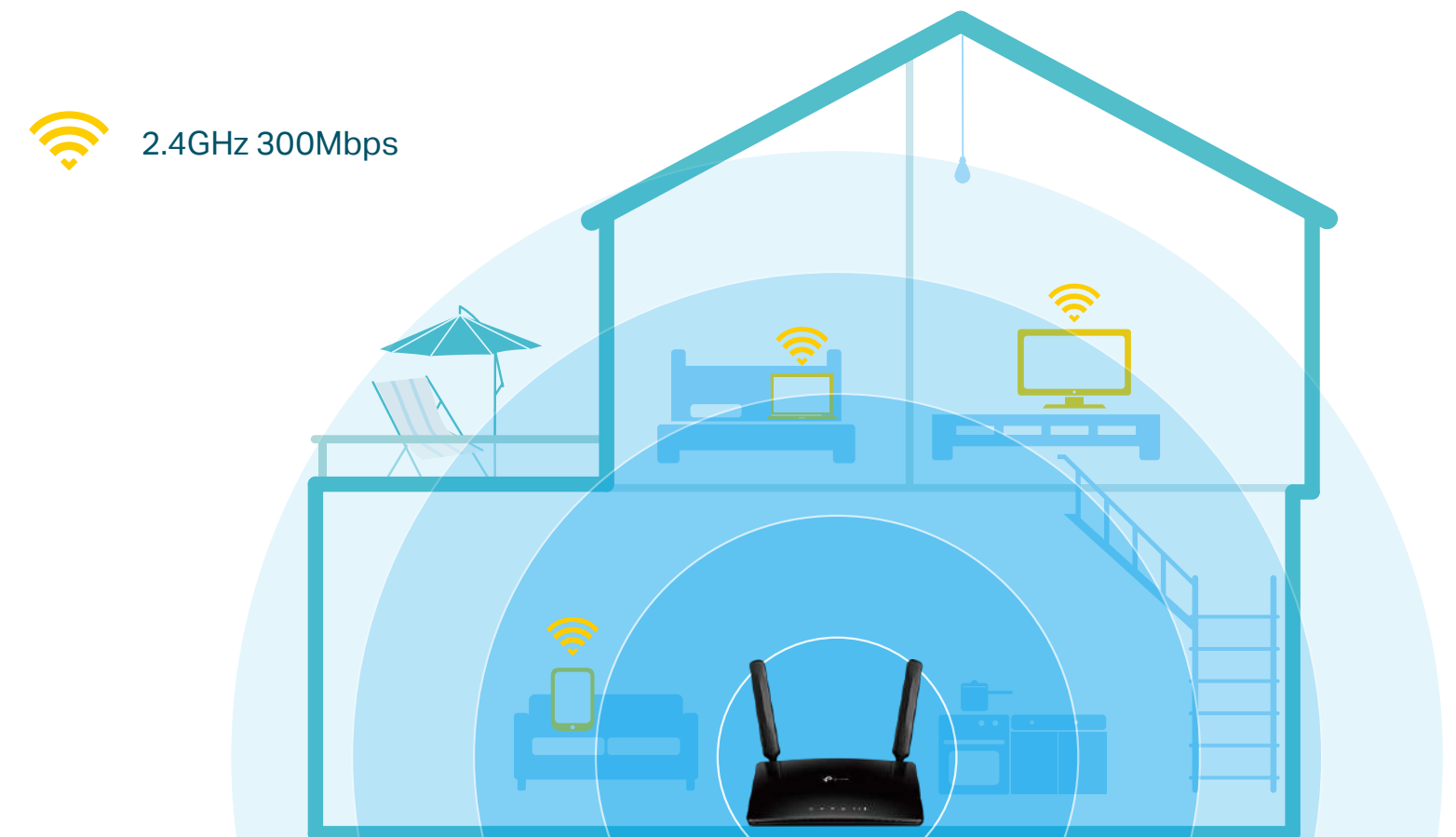
## Superfast 4G LTE Speed for Reliable Wi-Fi

The TL-MR6400 uses 4G LTE technology to achieve speeds of up to 150Mbps download and 50Mbps upload. It also shares a Wi-Fi network with maximum speed of 300Mbps on 2.4GHz for gaming, streaming, and more.



## Design for Maximum Network Coverage

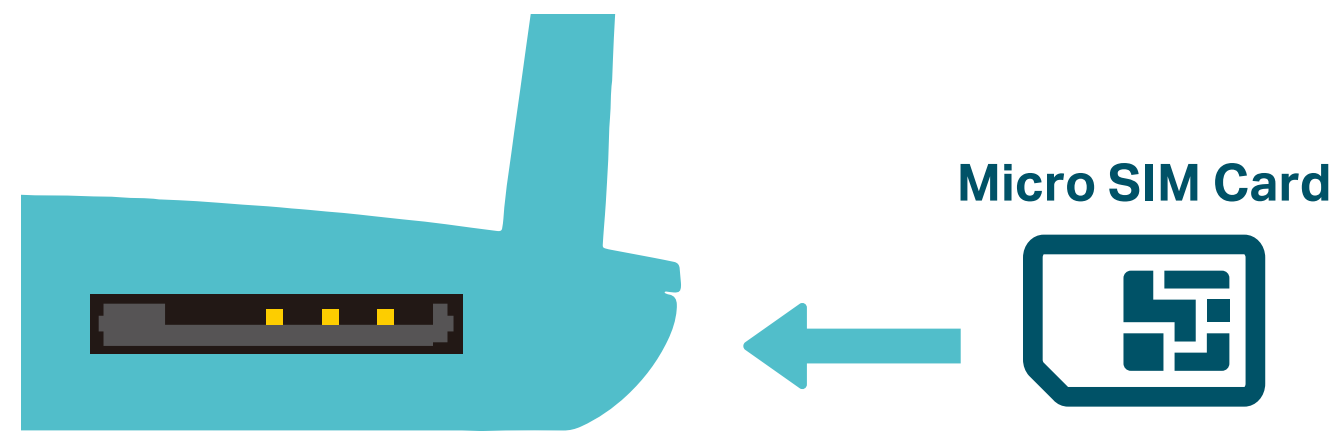
Advanced LTE antennas make efficient and stable connections to every device. Power Amplifier and Low Noise Amplifier boost sending and receiving capabilities, creating a wide-coverage Wi-Fi network for your home.



# Highlights

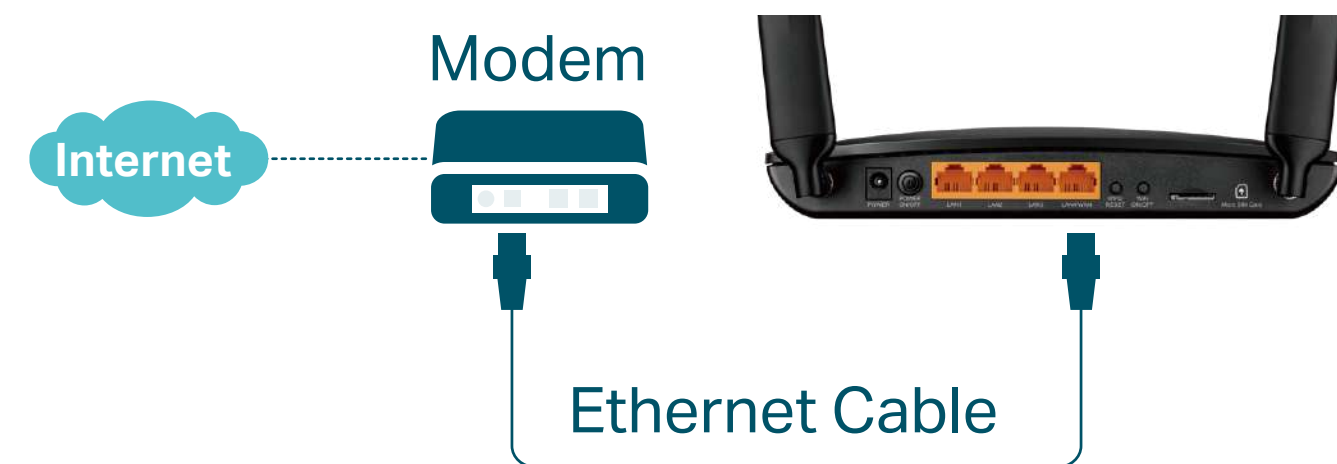
## Plug and Play with a Micro SIM Card

Simply insert your 3G/4G Micro SIM card into the built-in slot, turn on the TL-MR6400 and start surfing!

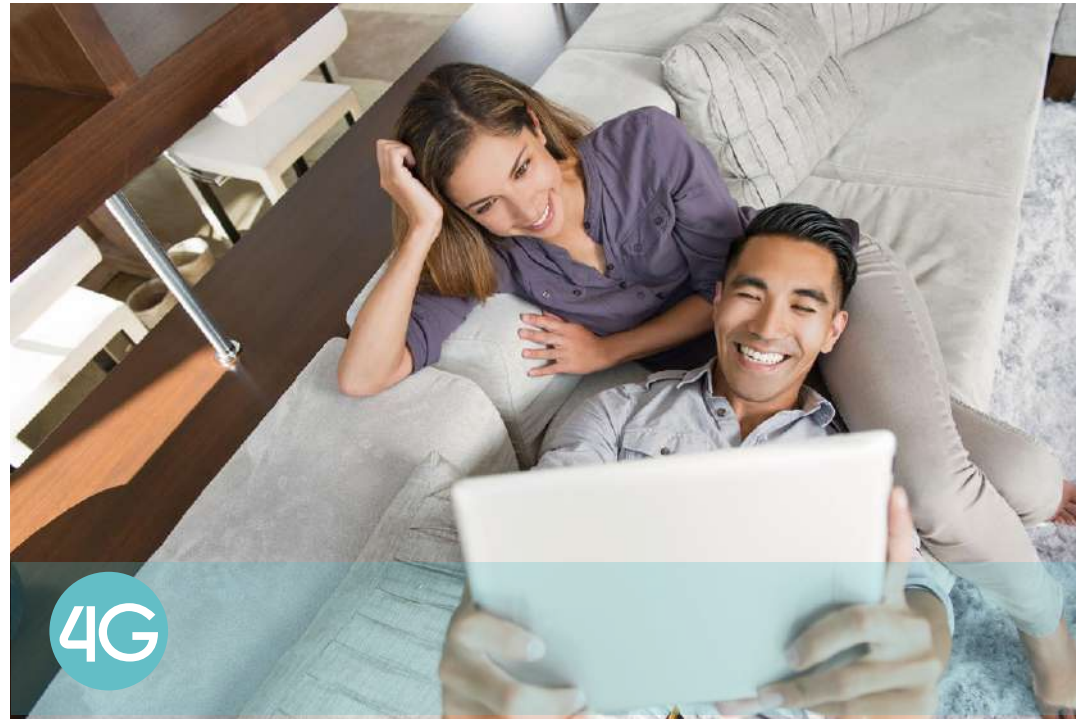


## Available WAN Connection Backup

With a fully functional WAN/LAN port, TL-MR6400 can work as a router which is compatible with cable, fiber, and DSL modems.



# Features



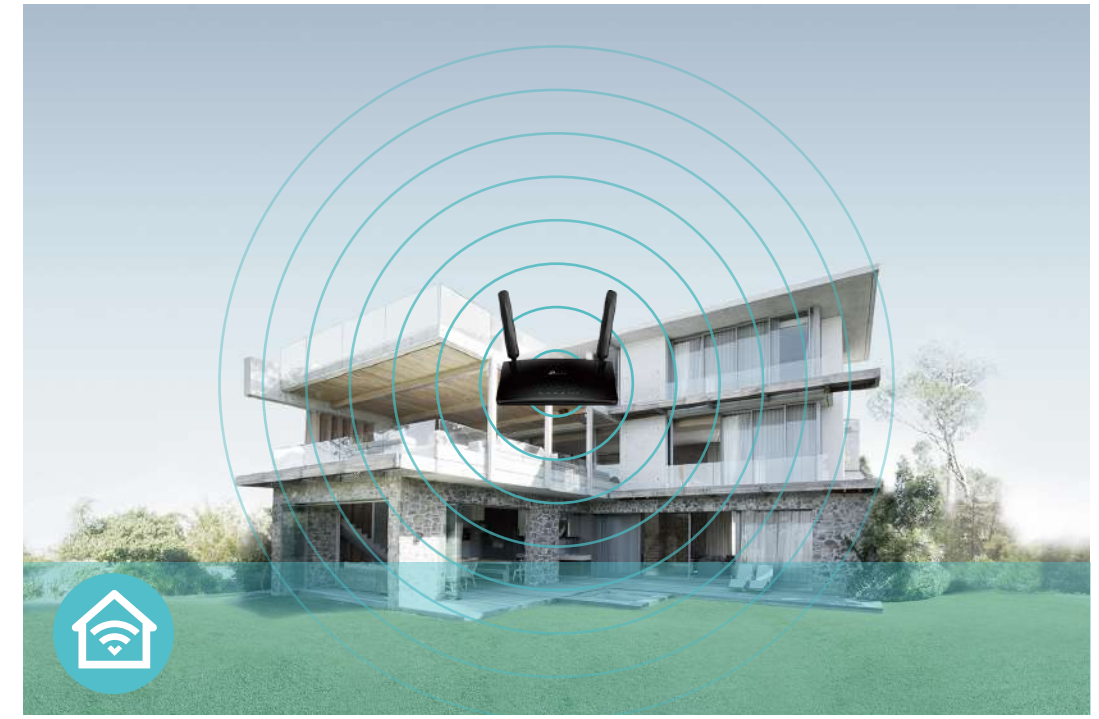
## 4G LTE

- 4G LTE – Ideal for cutting-edge 4G LTE network
- Faster Connections – Up to 150Mbps download speed and 50Mbps upload speed
- Backward Compatible – Compatible with 4G/3G network



## Speed

- 300Mbps Wireless Speed – 300Mbps Wi-Fi allows stable speed for wireless activities, such as streaming, surfing, browsing and posting social media



## Wi-Fi Range

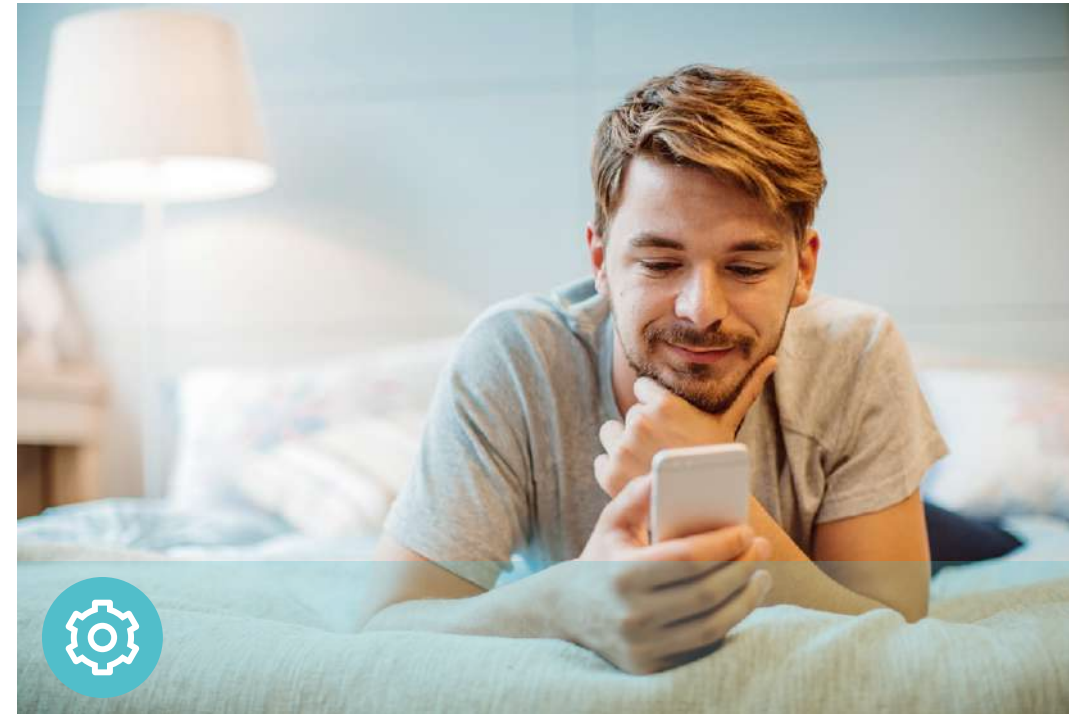
- Better Coverage – Integrated antennas provide stable wireless connections and better coverage

# Features



## Reliability

- **Easy Bandwidth Management** – Advanced QoS makes it easier for you to manage the bandwidth of connected devices
- **Superior Stability** – Powerful processor enables you to connect up to 32 wireless devices with ease



## Ease of Use

- **Intuitive Web UI** – Ensures quick and simple installation without hassle
- **Fast Encryption** – One-touch WPA wireless security encryption with the WPS button
- **Wi-Fi On/Off** – Conveniently turn on or off wireless radio as required
- **Hassle-free Management with Tether App** – Network management is made easy with the TP-Link Tether App, available on any Android and iOS device
- **Online Upgrade** – Keeps you informed of the latest firmware and allows online upgrade on the web UI



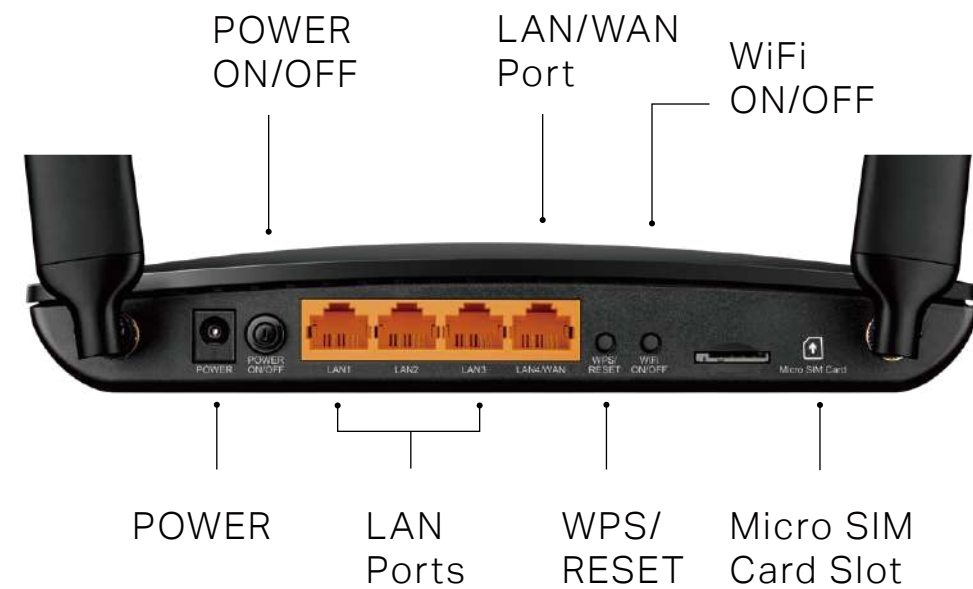
## Security

- **Guest Network** – Keeps your main network secure by creating a separate network for friends and visitors
- **Access Control** – Establishes a whitelist or blacklist to allow or restrict certain devices to access the internet
- **Parental Controls** – Restrict internet access time and contents for children devices
- **Encryptions for Secure Network** – WPA-PSK/WPA2-PSK encryptions provide active protection against security threats

# Specifications

## Hardware

- Ports: 3 10/100Mbps LAN ports, 1 10/100Mbps LAN/WAN Port, 1 Micro SIM Card Slot
- Button: WPS/RESET Button, WiFi ON/OFF Button, POWER ON/OFF Button
- Antenna: 2 × Detachable External 4G LTE Antennas
- External Power Supply: 9V/0.85A
- Dimensions (W x D x H): 7.95 × 5.55 × 1.32 in. (202 × 141 × 33.6 mm)



## Wireless

- Network Type:
  - 4G: FDD-LTE Cat4 (800/900/1800/2100/2600MHz), TDD-LTE (1900/2300/2500/2600MHz)
  - 3G: DC-HSPA+/HSPA+/HSPA/UMTS (900/2100MHz)
- Wireless Standards: IEEE 802.11b, 802.11g, 802.11n
- Frequency: 2.4GHz
- Signal Rate: 300Mbps at 2.4GHz
- CE EIRP: <20dBm (2.4GHz)
- Reception Sensitivity:
  - 11g 54M: -74dBm
  - 11n HT20: -71dBm
  - 11n HT40: -67dBm
- Wireless Function: Enable/Disable Wireless Radio, Wireless Schedule, WMM, Wireless Statistics
- Wireless Security: 64/128-bit WEP, WPA/WPA2, WPA-PSK/WPA2-PSK encryptions

# Specifications

## Software

- Operation Modes: 3G/4G Router, Wireless Router
- WAN Type: Dynamic IP/Static IP/PPPoE/PPTP(Dual Access)/L2TP(Dual Access)
- DHCP: Server, Client, DHCP Client List, Address Reservation
- Quality of Service: WMM, QoS
- Port Forwarding: Virtual Server, Port Triggering, UPnP, DMZ
- Dynamic DNS: DynDns, NO-IP
- VPN Passthrough: PPTP, L2TP, IPSec
- VPN Server: PPTP VPN, IPSec VPN , OpenVPN
- Access Control: Parental Controls, Local Management Control, Host List, Access Control
- Firewall Security: DoS, SPI Firewall, IP and MAC Address Binding
- Protocols: IPv4, IPv6
- Management: Access Control, Local Management, Remote Management
- Guest Network: 2.4GHz guest network

## Others

- Certification: CE, RoHS
- Requirements:
  - Microsoft Windows 98SE, NT, 2000, XP, Vista™ or Windows 7, 8, 8.1, MAC OS, NetWare, UNIX or Linux
  - Internet Explorer 11, Firefox 12.0, Chrome 20.0, Safari 4.0 browsers or higher, or other Java-enabled browsers
  - Micro SIM Card
- Environment
  - Operating Temperature: 0°C~40°C (32°F ~104°F)
  - Storage Temperature: -40°C~70°C (-40°F ~158°F)
  - Operating Humidity: 10%~90% non-condensing
  - Storage Humidity: 5%~90% non-condensing
- Package Contents
  - 300Mbps Wireless N 4G LTE Router TL-MR6400
  - Power Adapter
  - RJ45 Ethernet Cable
  - Quick Installation Guide



For more information, please visit

<http://www.tp-link.com/en/products/details/TL-MR6400.html>

or scan the QR code left

Specifications are subject to change without notice. TP-Link is a registered trademark of TP-Link Technologies Co., Ltd. Other brands and product names are trademarks or registered trademarks of their respective holders. Copyright ©2019 TP-Link Technologies Co., Ltd. All rights reserved.

\* Attention: This device may only be used indoors in all EU member states and EFTA countries.

\* Maximum wireless signal rates are the physical rates derived from IEEE Standard 802.11 specifications. Actual wireless data throughput and wireless coverage are not guaranteed and will vary as a result of network conditions, client limitations, and environmental factors, including building materials, obstacles, volume and density of traffic, and client location.

[www.tp-link.com](http://www.tp-link.com)

TP-Link 300Mbps Wireless N 4G LTE Router TL-MR6400