



# 3G/4G Wireless N Router

3G/4G and WAN  
for Ensured Access

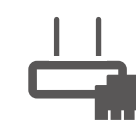
TL-MR3420



300Mbps



3G/4G Sharing

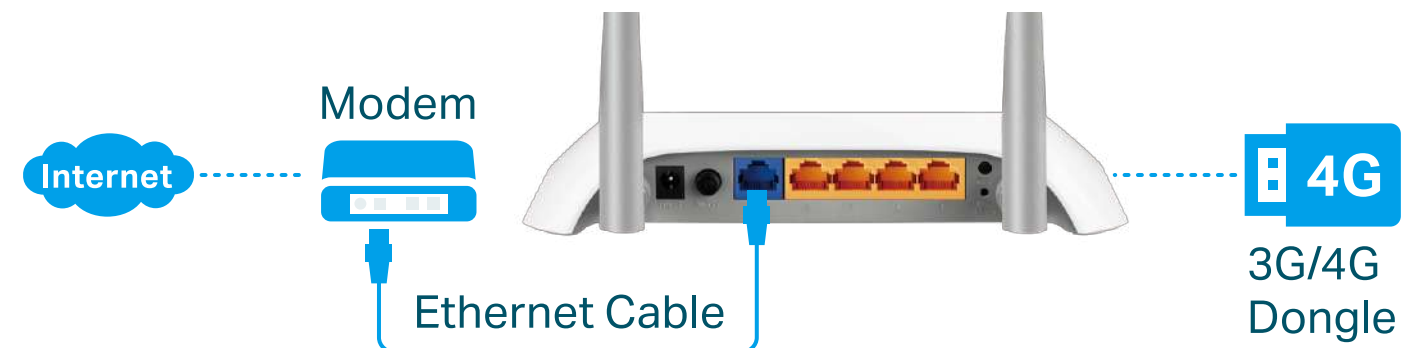


WAN Connection  
Backup

# Highlights

## Ensure Internet Access

With both 3G/4G and WAN connectivity, the TL-MR3420 always keeps you online. Take advantage of flexibility when choosing and setting up your network, and share a 3G/4G mobile broadband connection through wired or wireless connections.



## Quick and Reliable Wi-Fi

Strong Wi-Fi speeds of up to 300Mbps are perfect for daily internet access needs to devices throughout your home.



# Highlights

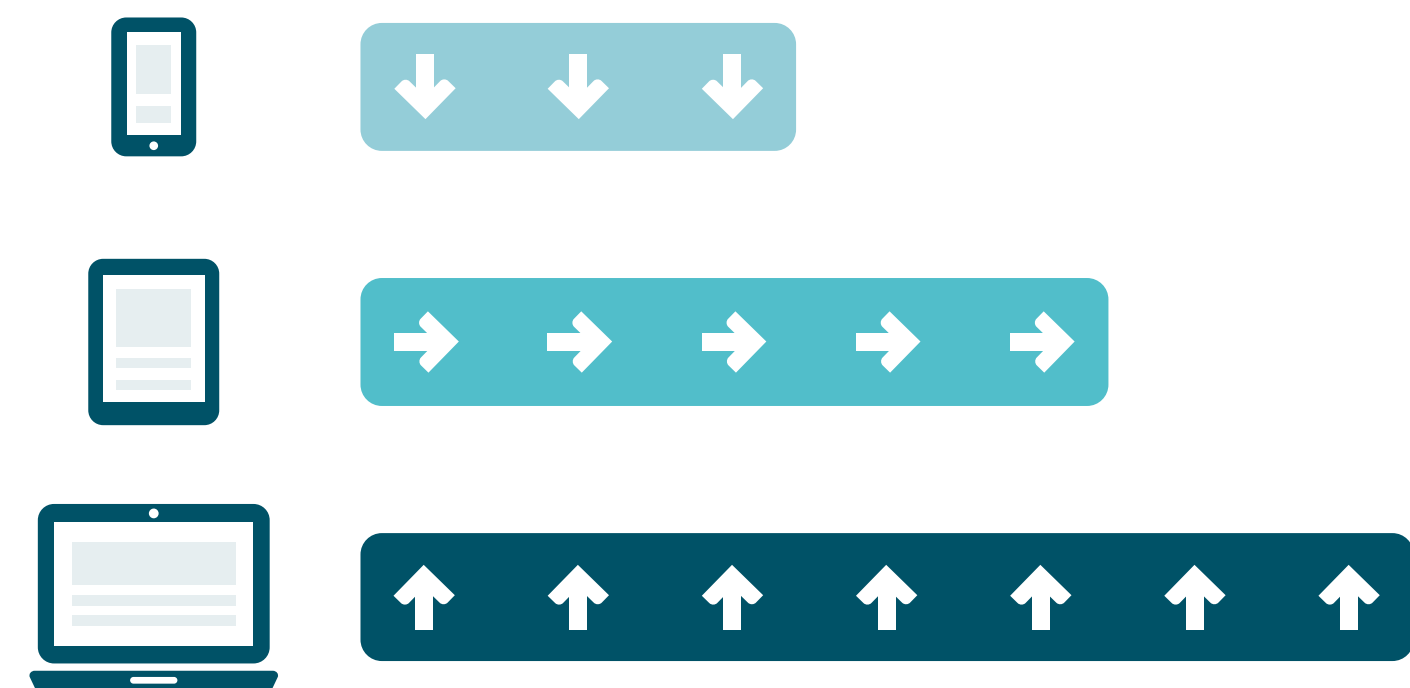
## Parental Controls

Easily manage when and how connected devices can access the internet to ensure safe, responsible surfing for your whole family.



## Bandwidth Control

Assign your preferred devices with more bandwidth to give them priority for bufferless streaming and lag-free gaming.

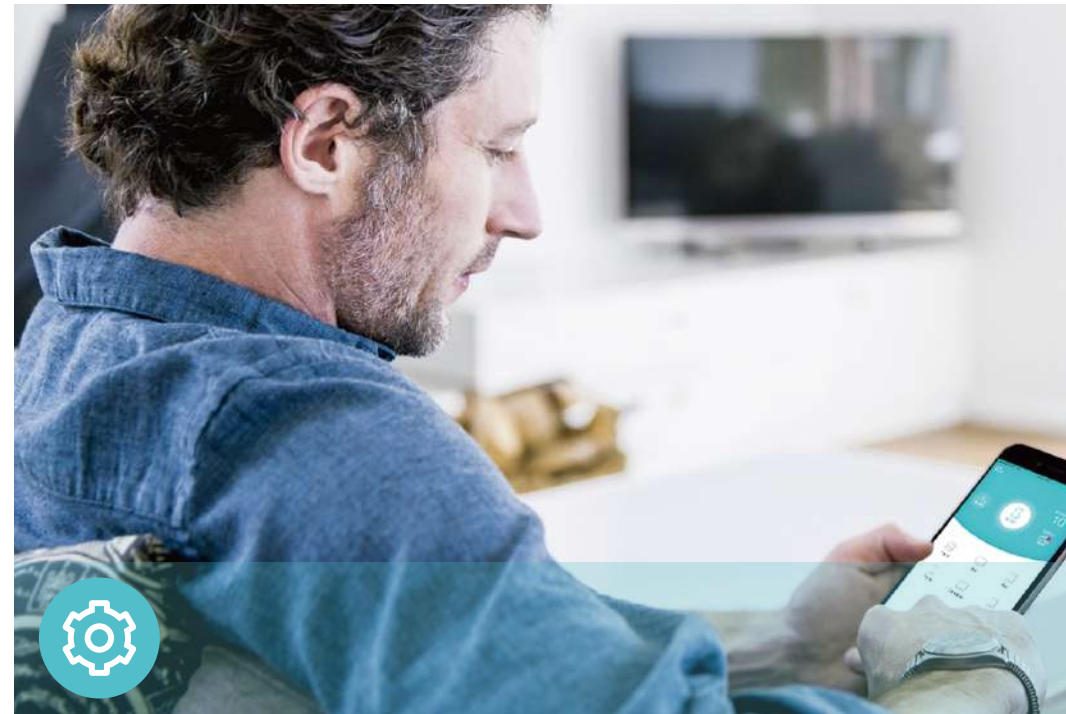


# Features



## Reliability

- **Wireless N Speed** – 300Mbps Wi-Fi speed meets your daily internet needs
- **802.11n** – Backward compatible with 802.11b/g products
- **Easy Bandwidth Management**– Bandwidth Control allocates necessary speed of each connected device to ensure quality of multimedia streaming



## Ease of Use

- **Intuitive Web UI** – Ensures quick and simple Installation without hassle
- **Fast Encryption** – One-touch WPA wireless security encryption with the WPS button
- **Hassle-free Management with Tether App** – Network management is made easy with the TP-Link Tether App, available on any Android and iOS device



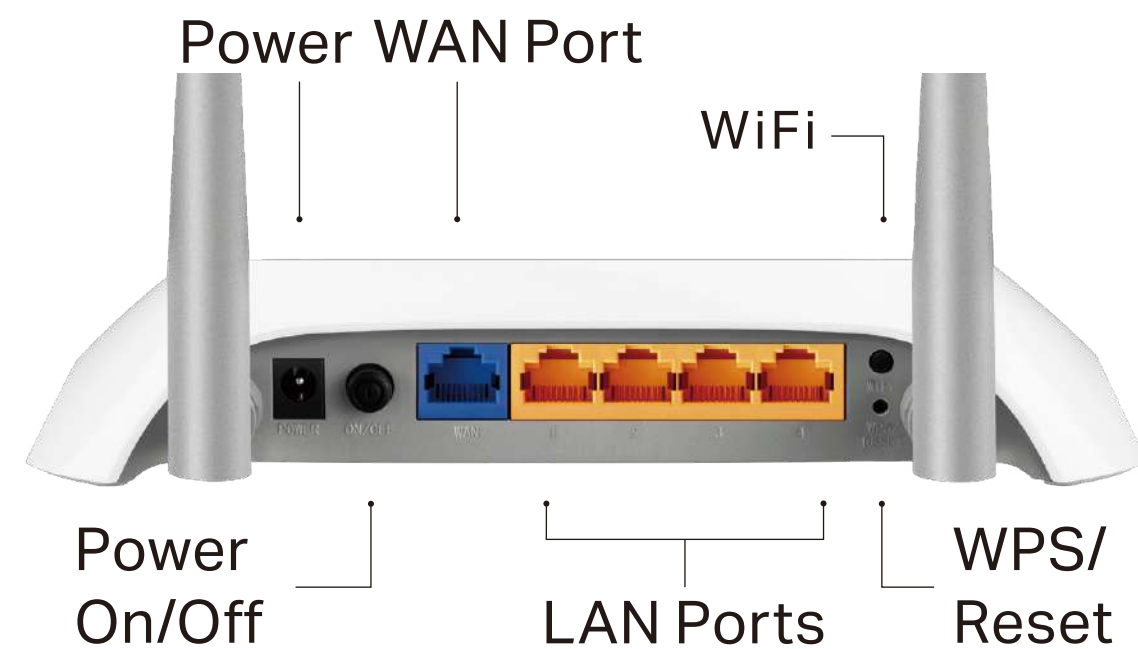
## Security

- **Guest Network** – Keeps your main network secure by creating a separate network for friends and visitors
- **Access Control** – Establishes a whitelist or blacklist to allow or restrict certain devices to access the internet
- **Parental Controls** – Restricts internet access time and contents for children devices
- **Encryptions for Secure Network** – WPA-PSK and WPA2-PSK encryptions provide active protection against security threats

# Specifications

## Hardware

- Ethernet Ports: 4 10/100Mbps LAN Ports, 1 10/100Mbps WAN Port
- Buttons: Power On/Off Button, Wi-Fi On/Off Button, WPS/Reset Button
- Antennas: Two Fixed Omni-Directional Antennas
- External Power Supply: 9V/0.85A
- Dimensions (W x D x H): 8.0× 5.4×1.7 in. (204×138×44mm)



## Wireless

- Wireless Standards: IEEE 802.11b/g/n
- Frequency: 2.4GHz
- Signal Rate: 300Mbps
- Transmit Power: < 20dBm
- Reception Sensitivity:  
2.4GHz:  
270M: -70dBm@10% PER  
130M: -73dBm@10% PER  
108M: -74dBm@10% PER  
54M: -75dBm@10% PER  
11M: -86dBm@10% PER  
6M: -92dBm@10% PER  
1M: -95dBm@10% PER
- Wireless Function: Enable/Disable Wireless Radio, WDS Bridge, WMM, Wireless Statistics
- Wireless Security: 64/128-bit WEP, WPA/WPA2, WPA-PSK/WPA2-PSK encryptions



# Specifications

## Software

- Quality of Service: WMM, Bandwidth Control
- WAN Type: Dynamic IP/Static IP/PPPoE/PPTP(Dual Access)/L2TP(Dual Access)
- Management: Access Control, Local Management, Remote Management
- DHCP: Server, DHCP Client List, Address Reservation
- Port Forwarding: Virtual Server, Port Triggering, UPnP, DMZ
- Dynamic DNS: DynDns, NO-IP
- Access Control: Parental Controls, Local Management Control, Host List, White List, Black List
- Firewall Security: DoS, SPI Firewall, IP and MAC Address Binding
- Protocols: IPv4, IPv6
- Guest Network: 2.4GHz guest network

## Others

- Certification:  
CE, RoHS
- System Requirements:  
Microsoft Windows 98SE/NT/2000/XP/Vista™/7/8/8.1/10, MAC OS, NetWare, UNIX or Linux  
  
Internet Explorer 11, Firefox 12.0, Chrome 20.0, Safari 4.0, or other Java-enabled browser
- Environment:  
Operating Temperature: 0°C~40°C (32°F ~104°F)  
Storage Temperature: -40°C~70°C (-40°F ~158°F)  
  
Operating Humidity: 10%~90% non-condensing  
Storage Humidity: 5%~90% non-condensing
- Package Contents  
3G/4G Wireless N Router TL-MR3420  
  
Power Supply Unit  
  
Ethernet Cable  
  
Quick Installation Guide



For more information, please visit

<http://www.tp-link.com/en/products/details/TL-MR3420.html>

or scan the QR code left

©2022 TP-Link

\*Maximum wireless signal rates are the physical rates derived from IEEE Standard 802.11 specifications. Actual wireless data throughput and wireless coverage, and quantity of connected devices are not guaranteed and will vary as a result of network conditions, client limitations, and environmental factors, including building materials, obstacles, volume and density of traffic, and client location.

[www.tp-link.com](http://www.tp-link.com)

TP-Link 3G/4G Wireless N Router TL-MR3420