

# PS-3180S

## Lite Managed PoE+ Industrial Switch

8 x 10/100/1000Base-T PoE+ with 2 x Gigabit SFP Uplink



### Description

Realizing the essentiality in ease of use for 24/7 surveillance for today's society, LINK develops PS-3180S Lite Managed Industrial PoE+ switch. The PS-3180S is working on OSI Layer 2 and engineered for outdoor installation with hardened components and enclosed in a case which can operate in wide temperature from -40°C to 75°C, and playful even in harsh environments providing reliable surveillance.

The switch is compiled with intelligent PoE+ (IEEE 802.3af/at) function on 8-Gigabit copper ports and allows to supply up to 30W per port power budget over the single Ethernet cable to satisfy Powered Devices such as Wireless AP, VoIP phones and IP cameras eliminating the need of external power outlets.

The 2-slot 100Base-FX/1000Base-X SFP give the advantages of configuring ring topologies for a safe, reliable and long distance Gigabit connectivity. In addition, the switch offers an easy to use of management functions to allow configuration and monitoring. Designed with sufficient beneficial features, PS-3180S can be considered as a reliable option for harsh outdoor surveillance.

**RoHS** **CE** **FC**



### Features Highlight

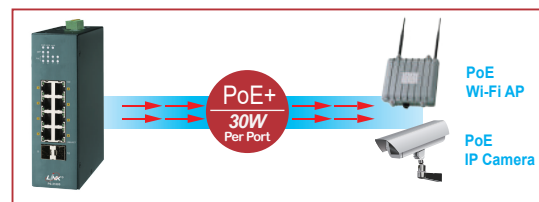
#### Robust Switch Performance

With a hardened metal case, surge and ESD protection, the PS-3180S provides a high level of immunity against electromagnetic interference and heavy electrical surges, thus facilitating easy deployment in demanding environments. In addition, the PS-3180S offers high performance switch architecture with eight 10/100/1000Base-T ports (support auto MDI/MDI-X and auto-negotiation) and two 100Base-FX/1000Base-X Ethernet SFP slots to meet the requirements of high-bandwidth access in wide operating temperatures.



#### High-Power Budget for PoE Network Devices

To fulfill the growing demand of high-bandwidth, high-power PoE for network applications and eliminating the cost of electrical cabling and circuits, the PS-3180S is designed under IEEE 802.3at standard PoE+. With 240W PoE power budget capability for whole system, the switch allows simple "plug-n-play" PoE for various types of high power consuming PoE devices. This makes the PS-3180S a very convenient solution for applications far away from power outlets satisfying PoE extension applications in much longer distances.



#### Intelligent PoE Alive Checking

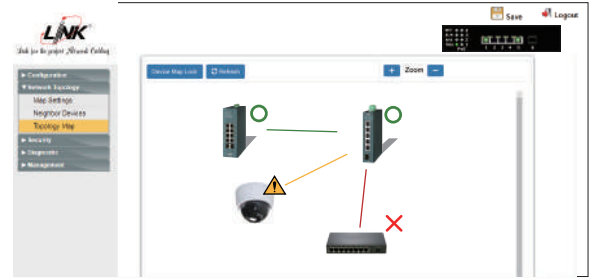
The PS-3180S is designed with intelligent PoE+ features to utilize power more efficient. To monitor real-time status of PDs, the switch sends alive-checking packets to PDs. If a PD fails to respond, the switch's PD live check feature detects the failure and reactivates the PD. This reduces management burden and increases system reliability.



**Features Highlight**

**Introducing the Topology Map**

Topology Map embedded Element Management System that allows users to view the topology map of connected devices and neighboring switches along with the link status. Its LLDP feature allows it to advertise its identities and capabilities on the wired Ethernet. This map like feature simplifies the network connection viewing and helps patterning by clicking on the icon.



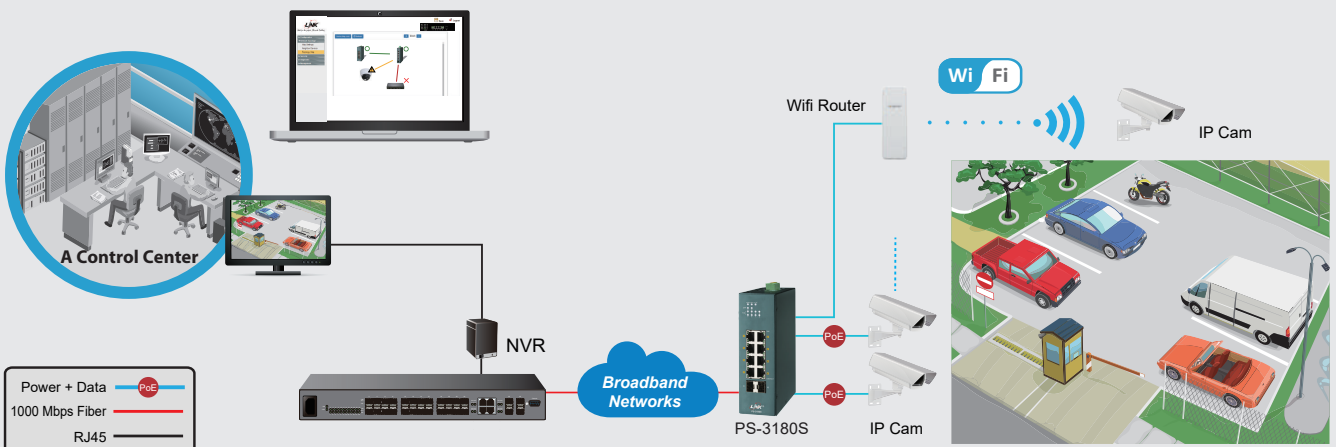
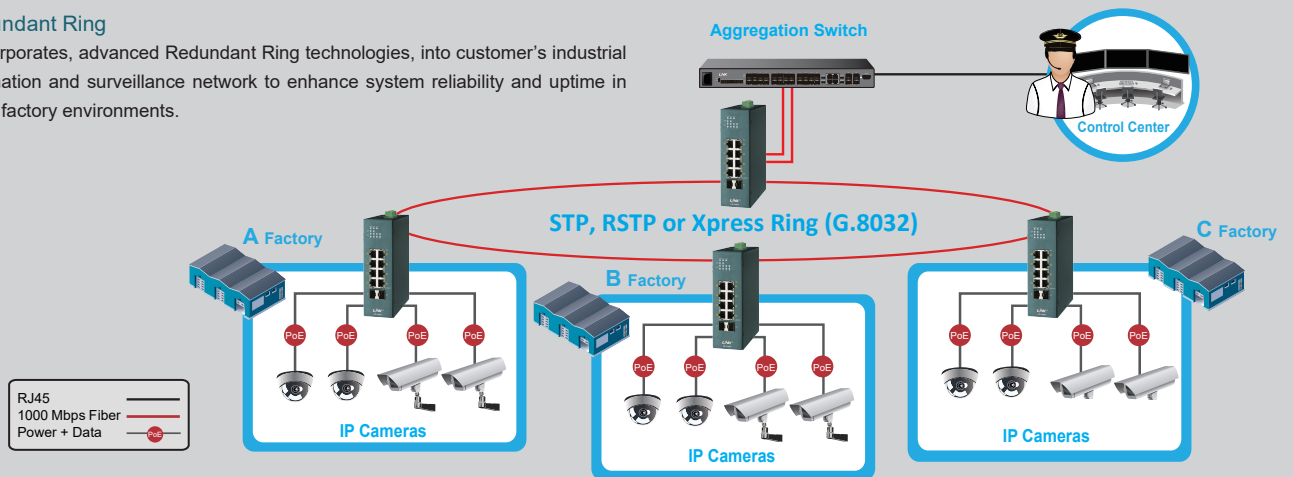
**Future-proof Fiber Connectivity with Dual 100FX/Gigabit SFP Slots**

With two multirate SFP slots, the PS-3180S easily establishes fiber channel for gigabit Ethernet connectivity and allows to take advantage of fiber based daisychain topology. The switch provides long distance, high-speed fiber connectivity while offering enhanced noise immunity and data security across deployed systems. The PS-3180S is a well-suited robust, cost-effective and future-proof solution for fiber based surveillance networks.

**Applications**

**Redundant Ring**

It incorporates, advanced Redundant Ring technologies, into customer's industrial automation and surveillance network to enhance system reliability and uptime in harsh factory environments.



**Specifications**

Standards	
IEEE 802.3	10Base-T
IEEE 802.3u	100Base-TX/FX
IEEE 802.3ab	1000Base-T
IEEE 802.3z	1000Base-SX/LX
IEEE 802.3x	Flow Control
IEEE 802.1ab	LLDP
IEEE 802.3af	PoE
IEEE 802.3at	PoE+
IEEE 802.3az	Energy Efficient Ethernet (EEE)
Interface	
Ports	8 x 10/100/1000Base-T (PoE/PoE+, RJ45 port) 2 x 100Base-FX/1000Base-X, SFP port
DIP Switch	Power voltage drop alarm setting (PWR & RPS), Broadcast storm control setting (STORM), Port-based QoS setting (QoS on P1 & P2), Fiber port speed setting (100FX on P9 & P10)
LED Panel	PWR, RPS, ALM, SFP, PoE, 1000, LNK/ACT
Features	
Performance	Jumbo frame Size: 10KB SDRAM: 128MB, Flash: 32MB MAC Table Entries: 8K Packet buffer size: 4.1Mbit Switching Capacity: 20Gbps Forwarding Rate: 14.9Mpps
Management	CLI, Telnet, SSH, HTTP, HTTPS, SNMP v1/v2c, SNMP v3, SNMP Trap, Management VLAN (MVLAN), Firmware upgradable, Configuration Backup/Restore, Syslog, SNTF, LLDP, DHCP Client, Port Mirroring Server (service) control, Port Utilization, Alarm Information, ModbusTCP, Power Down trap Topology Map, Dashboard, Installation Wizard Port Configuration (enable/disable,speed/duplex), ONVIF, Port Statistic, System reboot from remote side, User Account with authority, Web GUI, IPv4 Client
Reliability	STP(802.1d)/RSTP(802.1w), ERPS v1/v2, Code redundancy
VLAN	802.1Q VLAN, Port-based VLAN (Port Isolation)
Traffic Control	802.1p QoS, Flow Control, Traffic Monitor (Abnormal Traffic Detection), Storm Control, Port Isolation, Loop Detection Storm alarm threshold per port
Security	ACL (Access control list), Port Security (MAC limit) Port-based 802.1X, BPDU Guard BPDU Filter, ROOT Guard, Trusted Managed Host
PoE/PoE+	PoE Scheduling, PD Alive Check, PoE Power on/off, PoE Priority, Power budget control per system, Power budget control per port, Power delay

Power	
Input Voltage	Primary inputs : 48~57VDC Redundant inputs : 48~57VDC 6-pin Terminal block
Power Consumption	System : 10W PoE Power Budget : 240W (Full loaded)
Alarm Relay	One relay output, 1 A @ 24V DC
Surge Protection	Ethernet port:6KV Power input:1KV ESD Protection (Air/Contact):8KV/4KV EFT Protection:1KV

Mechanical and Environment	
Housing	Aluminum (IP30 Protection)
Mounting	DIN-Rail
Operating Temperature	-40°C~75°C
Storage Temperature	-40°C~85°C
Operating Humidity	5 to 95% RH (non-condensing)
Storage Humidity	5 to 95% RH (non-condensing)
Weight	560g
Dimension (WxHxD)	50x160x120mm (1.97x6.3x4.72inch)

Certifications	
EMI	FCC Part 15 Subpart B Class A EN 55032 : class A EN 55011 : 2009 class A EN 61000-6-4
EMS	EN 55024 EN 61000-6-2 EN 61000-4-2 ( ESD ) EN 61000-4-3 ( RS ) EN 61000-4-4 ( Burst ) EN 61000-4-5 ( Surge ) EN 61000-4-6 ( CS ) EN 61000-4-8 ( PFMF )
Shock	IEC 60068-2-27
Freefall	IEC 60068-2-32
Vibration	IEC 60068-2-6
Safety	IEC/EN/UL 60950-1

Ordering Information	
PS-3180S	Lite Managed Industrial PoE+ Switch 8x10/100/1000Base-T PoE/PoE+ and 2xSFP port 160W, 48V, Industrial Grade AC Power Adapter (PS-9003) (-30°C~60°C for 220V AC input)

**Note :**  
 \* The SFP communication distance upon the request (support 550m to 120km).  
 \* Specifications subject to change without notice.

**Dimension**

