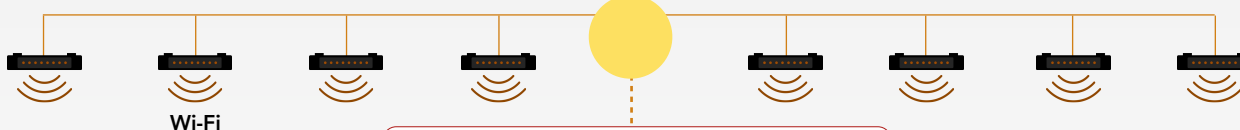
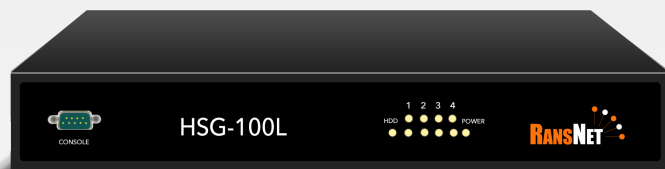
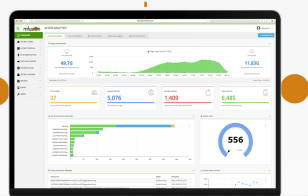


## MPOWER • MONETIZE • MANAGE • MONITOR

### mbox HotSpot Gateway



### Content Management System



#### Flexible Wi-Fi Sign-in Method

- Direct Access Login
- Social Media Login
- Email/SMS OTP Login
- QR Code/APPs Login
- Premium Wi-Fi Login

\*\* OpenAPI Integration with PMS/CRM  
\*\* POS Printer Integrated

#### Integrates with any Wi-Fi Infra

- Customisable Login Page (Built-in templates for various designs)
- Ads/Campaign Management
- Collects User Profiles (Name | Gender | Email | Mobile | etc..)

\*\* Web based CMS for portal customization

**SECURER ACCESS**  
**BETTER USER EXPERIENCE**  
**HIGHER RETURNS**  
**LOWER COST**

### Secure & Flexible Wi-Fi User Access

### Wi-Fi Monetisation

2

### User Login to Wi-Fi



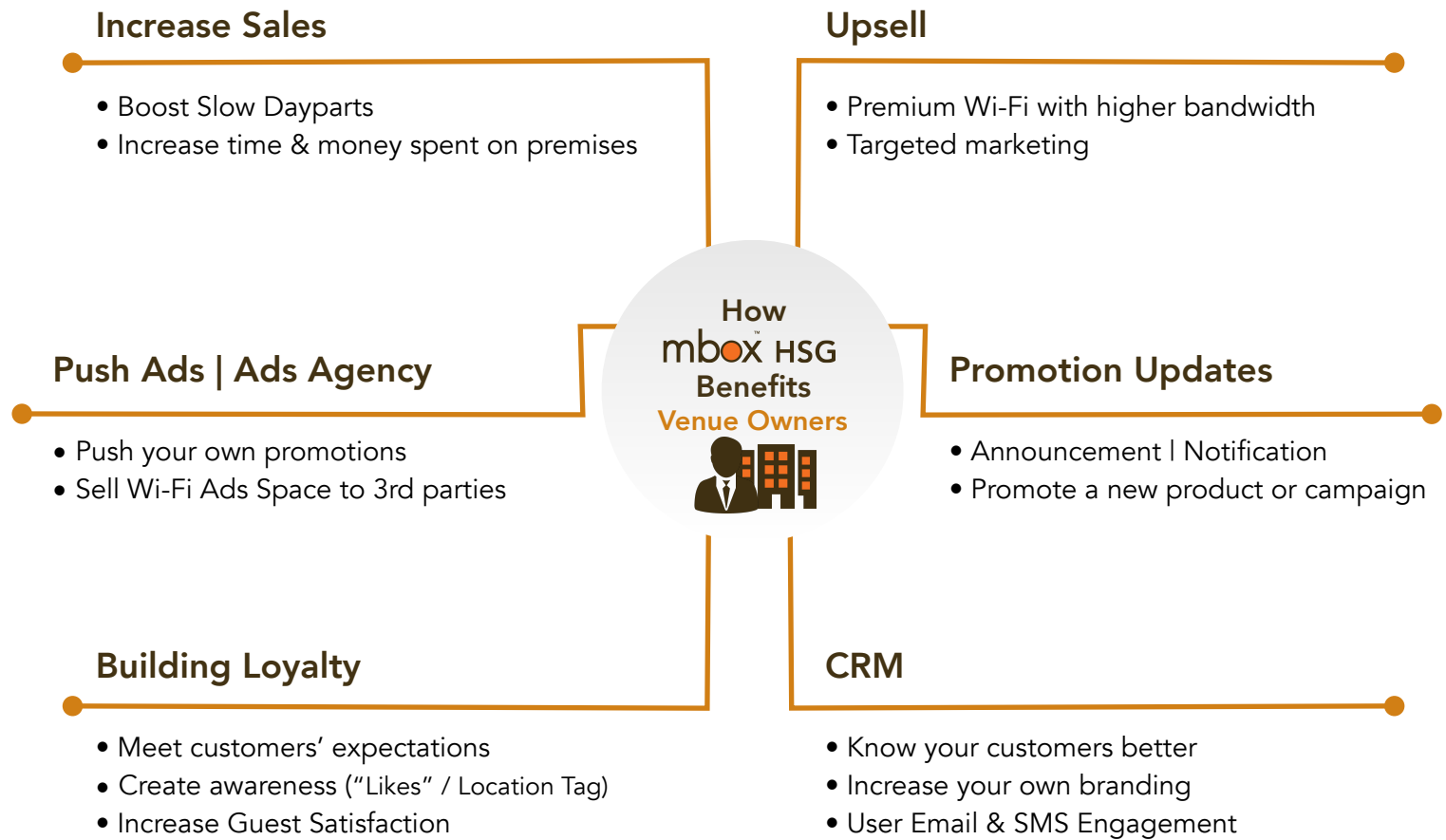
#### Secure access control options

- Per User Speed Limit
- Patented Dynamic Bandwidth Allocation
- Time/Volume Based Control
- User Session Control
- Seamless Re-login, Client Roaming
- Device/MAC Lockdown
- Access Logging for compliance

#### Wi-Fi advertising

- Wi-Fi Login Page Ads
- Location-based Ads
- In-session Ads Injection
- User Engagement
- Location/Profile based redirect URL

## TRANSFORMING COST CENTER INTO REVENUE GENERATING PLATFORM



**mbox HSG | Wi-Fi is no longer a cost. It's an investment.**

Hotels | Malls | Retail chains | Schools | Hospitals | F&Bs



## Specifications



	HSG-100L
<b>Performance</b>	
<b>Total HotSpot Instances (VLANs)</b>	100
- Max Throughput per HotSpot Instance	100Mbps
- Max Concurrent Devices per HotSpot Instance	100
<b>Total Throughput (w/ hotspot)</b>	250Mbps
<b>Total Current Devices (w/ hotspot)</b>	100
Total Throughput (w/o hotspot)	800Mbps
Total Concurrent Devices (w/o hotspot)	1000
Processor	Multi-core
Memory (RAM)	1GB
Gigabit Interface	4 x GE
10G Interface (fiber or copper)	-
<b>Network and Security</b>	
Stateful Firewall & DHCP Server	✓
Static, Dynamic Routing (OSPF/BGP)	✓
NAT, PAT, SNAT, DNAT, Port forwarding	✓
IPSec, GRE, SSLVPN, L2TPv3	✓
IPv4 and IPv6 Capable	✓
VLAN, Trunking (802.1q), Bonding	✓
HA w/ Stateful Failover	✓
<b>Captive Portal Features</b>	
Login page templates and CMS	✓
Bandwidth Control (Static/Dynamic)	✓
Time/Data/Session/Device Control	✓
Whitelist by URL/Domain/IP/MAC	✓
Local Authentication (RADIUS)	✓
SMS & Email Signup, Social Media, POS, CRM, LDAP, RADIUS proxy	✓
PMS/API/payment gateway integration	✓
Landing page and In-session ads	✓
User log and data Analytics	✓
<b>Management &amp; Monitoring</b>	
Wireless AP management (MACC)	-
mfusion monitoring & management	✓
Online Firmware Patching and Upgrade	✓
<b>Physical / Environmental Specs</b>	
Dimensions (mm) (WxHxD)	230 x 30 x 151.5
Weight	1kg
Power Consumption	< 18W
Redundant Power Supply	-
Design Form Factor	Desktop
Operating Temperature	0°C to 40°C
<b>Certifications</b>	
FCC/CE/ROHS	