



# CRS518-16XS-2XQ

A 100 Gigabit switch for enterprise networks and data centers

Hot-swappable parts and insane port density with 1.2 Tbps switching capacity!



**2X 100G QSFP28  
PORTS**



**16X 25G SFP28  
PORTS**



**HOT-SWAP POWER  
SUPPLIES**



**HOT-SWAP  
COOLING**



**ULTRA FAST MARVELL  
PRESTERA ALDRIN2  
SWITCH-CHIP**

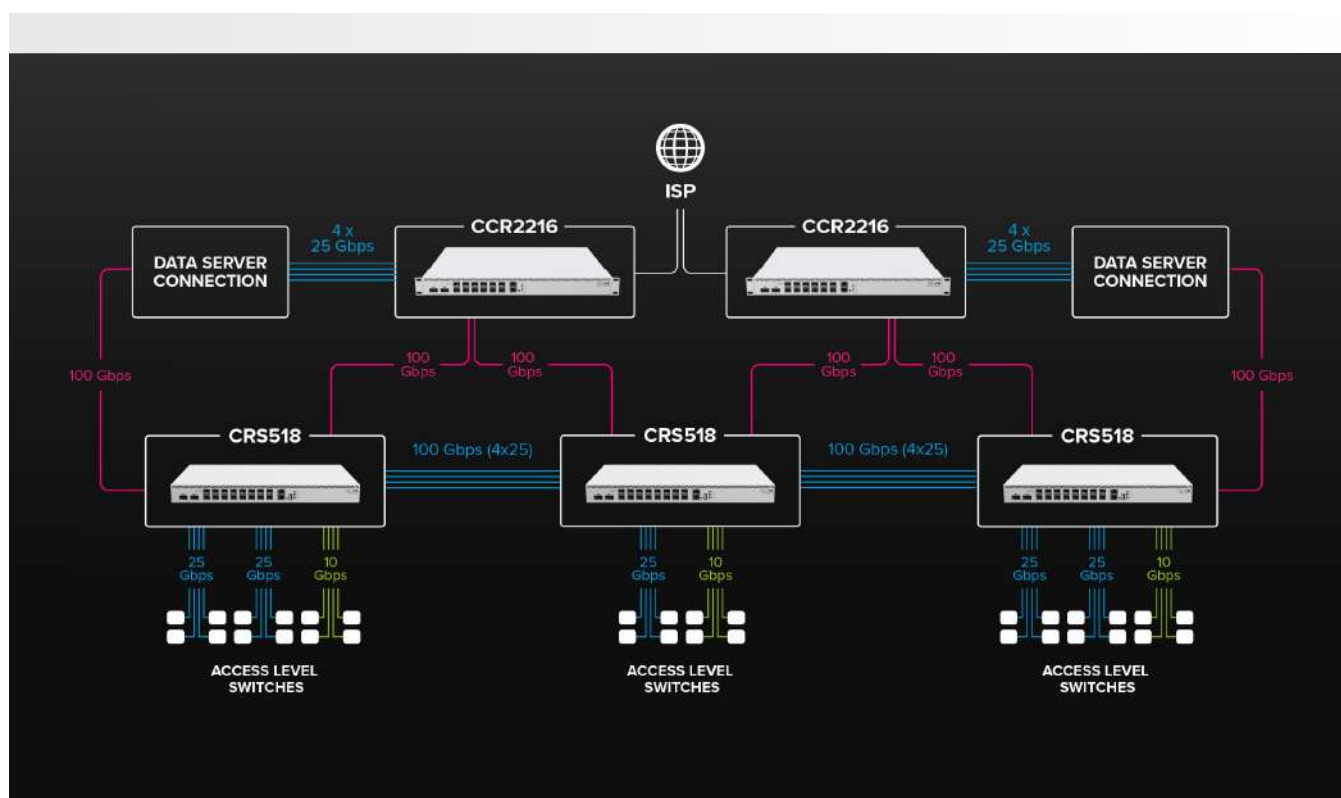
As our 100 Gigabit product family grows, the time has come to introduce a serious enterprise-level switch. A switch that is up for the challenge when the CRS504 port density is just not enough. Introducing the spectacular **CRS518-16XS-2XQ!**

With **2x 100 Gigabit QSFP28 ports** and **16x 25 Gigabit SFP28 ports**, this is the perfect cost-effective addition to any enterprise network or data center. And with dual-redundant hot-swappable power supplies and fans, you won't have to worry about unnecessary downtime.

Here's a real-life setup – similar to the one we're using in our office:

At the top, you could place two flagship CCR2216 routers to provide the main connectivity and routing. Then a blazing-fast 100 Gigabit connection leads to three CRS518 distribution level switches. This is where all the magic happens. The CRS518 switches connect every access level device to the main network, deal with traffic filtering, and network policy enforcement. And they handle all that with grace and dignity – thanks to the fantastic **Marvell Prestera Aldrin2 switch-chip**. The same chip you've seen in our flagship CCR2216 that did wonders with L3 Hardware Offloading.

In this setup, we also have a direct link aggregation connectivity between the CCR2216 routers and the data servers. For extra efficiency and traffic distribution.



**600 Gbps**

Throughput

**1.2 Tbps**

Switching capacity

Up to **600 Mpps**

Forwarding rate



*The 25-gigabit ports are backward compatible with 10 Gigabit and 1 Gigabit SFP devices. Mix and match as you need!*

The two hot-swap power supplies support a high input voltage range: 100-240V. The board itself uses up to 45W of power, while the total maximum power consumption goes up to 77W with all the attachments. It can be a bit more power-hungry than the CRS504, but you would be too if you had 16x 25-Gigabit ports, wouldn't you?

Our 100 Gigabit product family keeps growing: switches, routers, cables, and QSFP28 modules. If you want real speed and ultimate flexibility for the best price on the market – you want MikroTik!

*Nothing can stop this switch: it supports VLAN (802.1Q, 802.1ad), **L3 hardware offloaded routing**, ACL, LACP, MLAG, Jumbo frames, IGMP/MLD snooping, and so on. Keep your RouterOS up to date and enjoy the real power of CRS!*



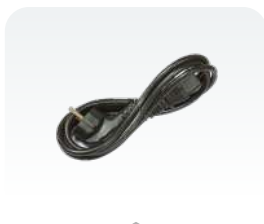
## • Specifications

Product code	CRS518-16XS-2XQ-RM
Switch chip model	98DX8525
CPU	QCA9531 650 MHz
CPU architecture	MIPSBE
CPU core count	1
Size of RAM	64 MB
RAM type	DDR2
Storage	16 MB, Flash
Number of 100M Ethernet ports	1
Number of 25G SFP28 ports	16
Number of 100G QSFP28 ports	2
USB port	1 (type A)
Operating system	Only v7 RouterOS
Dimensions	443 x 265 x 44.5 mm
Operating temperature	-40°C to +70°C

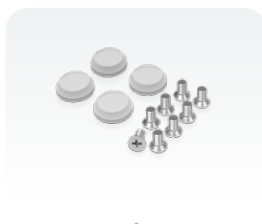
## • Powering

Number of AC inputs	2
Nominal voltage	12 V
Nominal current	12.5 A
AC input range	100-240 V
Max power consumption (without attachments)	45 W
Max power consumption	77 W

## • Included parts



2 Power cords



Fastening set



Rack ears