

# Category 6 RJ45 Modular Jacks



LINK Category 6 RJ45 modular jack, Slim type compliant ISO/IEC 11801 Class E and ANSI/TIA- 568.2-D requirements for category 6 performance. The Jacks accept 22-26 AWG solid conductor and combine two wiring of T568A/B (Universal color pattern) for easy installation. The unshield Jacks is design of 110 IDC impact tool and Krone insertion tools and LINK fast termination tool which can be protect of dust by cover cap with cable tie for long life guaranteed.

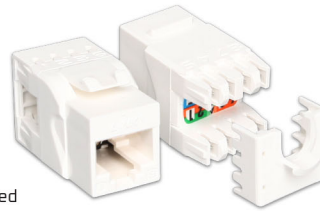
## SPECIFICATION



Standard	: ANSI/TIA-568.2-D Category 6, ISO/IEC11801:2017 Class E, EN50173-1
Application	: 10/100/1000 BASE-T, 2.5G/5G, 10G BASE-T, IEEE 802.3i/u/ab/bz/an, PoE/PoE+, 4/16 Token Ring, 52/155/622Mbps and 1.2Gbps ATM, ISDN, VoIP and other
Product Type	: RJ45 Jack with Cover caps
Wiring Pattern	: T568B/T568A Universal Color Pattern
Housing Material	: High Impact Flame Retardant Plastic
Housing Flame Rating	: UL 94V-0 ABS+PC
Contact Material	: Phosphor Bronze with over 50 micro-inches gold plating
Termination Block	: Dual Type 110 IDC or Krone
IDC Contact	: Phosphor Bronze with tin over 150 micro-inches nickel under plated
Durability	: 800 mating cycles (Jack Contact) 200 re-termination cycles (IDC contact)
Tool Free (Toolless Type)	: 180° IDC, UL94V-0 ABS
Shield Cover (Shield Type)	: 50-60 micro-inches Nickels Plating over Phosphor Bronze
Accept Wire Size	: 26AWG - 22AWG Solid & Stranded Wire
Approvals	: UL Listed E196947 and Intertek Channel Test
Certified	: Lead-free & RoHS Compliant



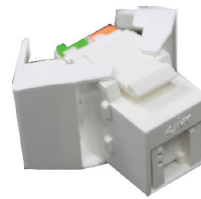
A



B



C



D



E

Part No.	Description	Type	Figure	Color
US-1006A	CAT6 RJ45 Slim White Jack (Color Changeable)	Unshield	A	White
US-1006SL*	CAT 6 RJ45 MODULAR JACK, SLIM TYPE	Unshield	B	White
US-1006STF	CAT 6 RJ45 MODULAR JACK, SLIM TOOL FREE	Unshield	C	White
US-1006TFAS	CAT 6 RJ45 MODULAR JACK, Auto Shutter	Unshield	D	White
US-1014	CAT 6 RJ45 MODULAR JACK, SHIELD	Full Shield	E	Metallic

\*US-1006SL Available 12 Color

## Category 6 In-Line Couplers

LINK In-Line Couplers provide a 180 Jack to Jack Splice. Couplers are available in eight position RJ45 Styles allow a simple operation with horizontal cables, which can easily be extended. Broken cables can be coupled without laying new complete cable segment. LINK In-Line Couplers are universal standards for all RJ45 Modular Plugs.

## SPECIFICATION

Standard	: ANSI/TIA-568.2-D Category 6, ISO/IEC11801:2017 Class D and EN50173-1
Application	: 10/100/1000 BASE-T, 2.5G/5G, 10G BASE-T, IEEE 802.3i/u/ab/bz/an, PoE/PoE+, 4/16 Token Ring, 52/155/622Mbps and 1.2Gbps ATM, ISDN, VoIP and other
Type of Product	: RJ45 JACK to RJ45 JACK
Color	: White / Metallic with LINK logo
Certified	: Lead-free & RoHS Compliant



A



B



C

Part No.	Description	Figure	Dimension (mm.)	Color
US-4006	CAT 6 IN-LINE COUPLERS	A	L 35 x W 16.3 x H 21	White
US-4006IL	CAT 6 IN-LINE COUPLERS, for PATCH PANEL	B	L30 x W14.5 x H16.5	White
US-4006S	SHIELD CAT 6 IN-LINE COUPLERS	C	L 36 x W 17.8 x H 22	Metallic