



# APC Back-UPS™ 950 / 1400

Part number: BX950U-MS, BX1400U-MS

## Battery Backup Power and Surge Protection for Computers and Electronics

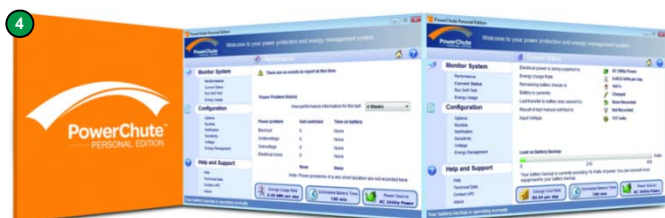
The Back-UPS 950 and 1400 from APC by Schneider Electric power your computer and electronic equipment during storms and outages. Both models feature Automatic Voltage Regulation (AVR). This feature instantly adjusts high and low voltage fluctuations to safe levels for connected electronics, saving battery power for when you need it most during storms and outages. Equipped with 4 Universal and 2 IEC sockets, the 950/1400 keep your desktop computer, monitor or other critical devices (router, modem, television, etc.) running when the power goes out. Specifically designed for electronic equipment in harsh power environments, the Back-UPS 950 and 1400 maximize productivity and work efficiency while providing critical power during emergencies.

### Product applications

- PC and peripherals
- Networking equipment (router, modem)
- Game consoles
- LCD / LED / OLED televisions
- NAS (Network Attached Storage)
- Projectors

## Product Features

- 1 LED Indicator and Audible Alarms**  
Quickly understand the unit and power status through visual and audible indicators.
- 2 Automatic Voltage Regulation (AVR)**  
“Double boost and single trim” AVR instantly corrects voltage fluctuations without using the battery, allowing you to work indefinitely through inconsistent power, saving battery life for outages.
- 3 6 Battery Backup and Surge Protected Sockets**  
Keep critical electronic equipment running when the power goes out, so you can protect your work and save your data.
- 4 USB Connectivity and PowerChute Software**  
Use your computer to access additional power protection and management features:
  - Preserves your work, shuts down system during outages
  - Restarts your system, minimizing work disruptions
  - Enables customization of your Back-UPS settings
  - Monitors and displays power and battery status
- 5 Data Line Surge Protection**  
Guards against damaging surges and spikes traveling over an analog phone line.
- 6 Push Button Circuit Breaker**  
Provides for easy recovery from circuit overloads and protects your fuse box and electronics from electrical damage.
- 7 Automatic Diagnostic Testing**  
Periodic battery self-test ensures early detection of a battery that needs to be replaced, ensuring your unit is ready when you need it.
- 8 2 Yr Warranty**  
APC offers a 2 year warranty with free technical phone and online support, providing customer peace of mind.
- 9 Easy to use “one step” battery connector.**



## Back-UPS BX950/BX1400 Specifications

Model Number	BX950U-MS	BX1400U-MS
<b>Output</b>		
Output Capacity	950 VA / 480 Watts	1400 VA / 700 Watts
Output Voltage / Frequency (On utility)	230V, 50/60+/-1Hz	
Output Voltage / Frequency (On battery)	230 Vac +/- 8%, 50 or 60 Hz +/-1 Hz (auto-sensing)	
Output Connections	4 Universal and 2 IEC sockets (all with battery backup and surge protection)	
Waveform Type	Stepped Approximation to Sine Wave	
<b>Input</b>		
Input Voltage / Frequency	150 – 280V, 50/60Hz +/-3Hz (default:50Hz)	
Input Connection	IEC-320 C14, NEMA 5-15P	
<b>Surge Protection</b>		
AC Power Surge Protection	All sockets	
Data Line Surge Protection	RJ-11 Modem/Fax protection	
<b>Physical</b>		
Unit Dimensions (H x W x D)	215 x 130 x 336 mm	
Unit Weight	8.0 Kg	12.0 Kg
Shipping Dimensions (H x W x D)	295 x 245 x 440 mm	
Shipping Weight	9.0 Kg	13.0 Kg
Color	Black	
UPC Code	731304315995	731304315940
<b>Battery</b>		
Battery Type	Maintenance-free, sealed lead-acid battery, leak proof	
Battery Size	12 volt, 9.0 Ah	12 volt, 7.2 Ah x 2
<b>Management</b>		
Alarms	Visual (LED) and audible alarms	
Adjustable Sensitivity and Transfer Voltage	Low, Medium (default), High	
Auto-Shutdown Software	PowerChute Personal Edition (Via USB interface. USB cable not included)	

**APC by Schneider Electric**

132 Fairgrounds Rd  
West Kingston, RI 02892

www.apc.com

