





AX3000 Gigabit Wi-Fi 6 Router

Faster. Broader. Unstoppable.




Archer AX55

 Super-Fast Wi-Fi
up to 3000 Mbps[†]

 Broad Coverage with
4 High-Performance Antennas

 Connect More Devices
OFDMA^{**}

 Easy Sharing with
a USB 3.0 Port

Highlights

Wi-Fi 6 Faster. Broader. Unstoppable.

The Archer AX55, based on the next generation 802.11ax Wi-Fi technology, takes your Wi-Fi to the next level while being backwards compatible with 802.11a/b/g/n/ac Wi-Fi standards.



Super Fast Wi-Fi

Enjoy full access to 8K streaming and high-speed downloading with HE160 on the 5 GHz band providing doubled bandwidth.^{††}



Connect Numerous Devices

Allow more applications to run at the same time. OFDMA transmits data to multiple devices simultaneously across 4 streams, drastically reducing latency.[‡]



Smart Power Saving

Conserve the power of your mobile devices by scheduling the connection time of battery-powered devices with Target Wake Time.[‡]



Backwards Compatible

Take your Wi-Fi to the next level while being backwards compatible with 802.11a/b/g/n/ac Wi-Fi standards.

TP-Link HomeShield

TP-Link's premium security services keep your home network safe with cutting-edge features for network and IoT protection.*



Network Protection

Detect cyber threats to keep your privacy and connected devices well protected.



Quality of Service (QoS)

Prioritize your bandwidth needs to get a better networking experience.



Parental Controls

Manage online time and block inappropriate content to keep families healthy online.



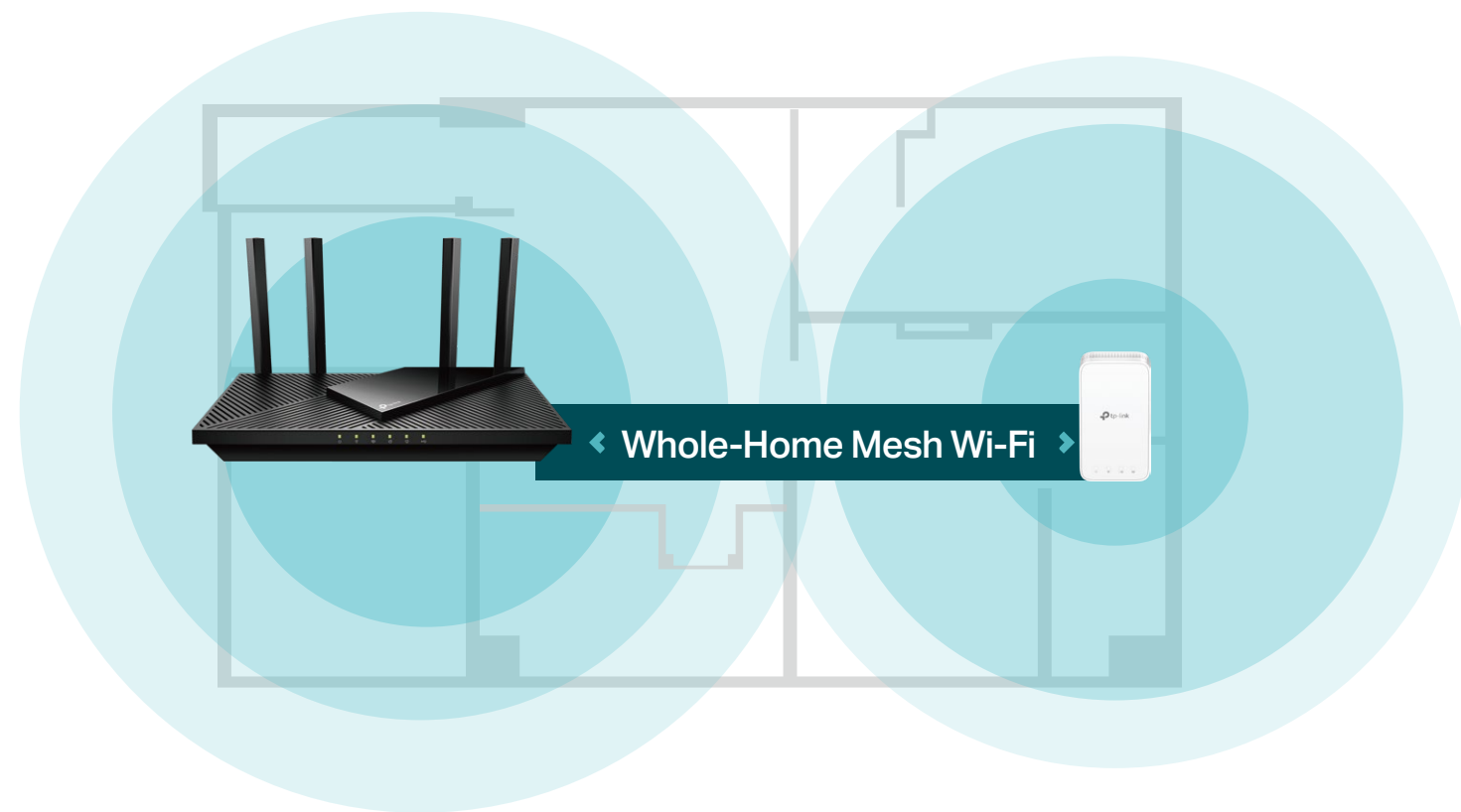
Comprehensive Reports

Gain full statistics and insights to help you know your home network better.

Highlights

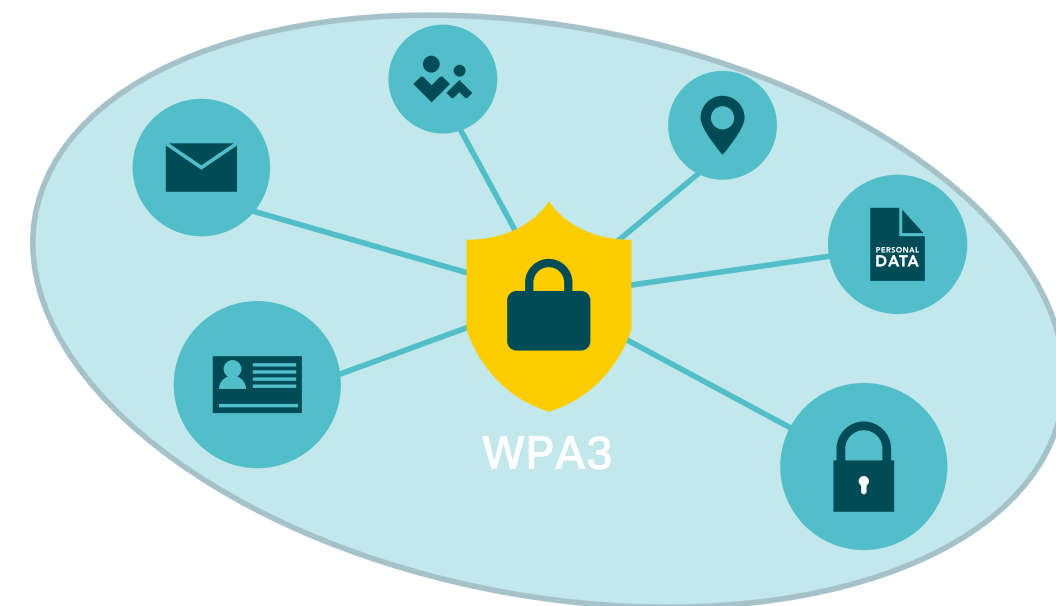
Flexible Whole-Home Wi-Fi

Four high-performance antennas and Beamforming deliver broad coverage. Furthermore, Archer AX55 supports OneMesh™ to form seamless whole-home coverage, preventing drops and lag when moving between signals.



WPA3 Security

The latest Wi-Fi security protocol, WPA3, brings new capabilities to improve cybersecurity. More secure encryption in Wi-Fi password safety and enhanced protection against brute-force attacks combine to safeguard your home Wi-Fi.*

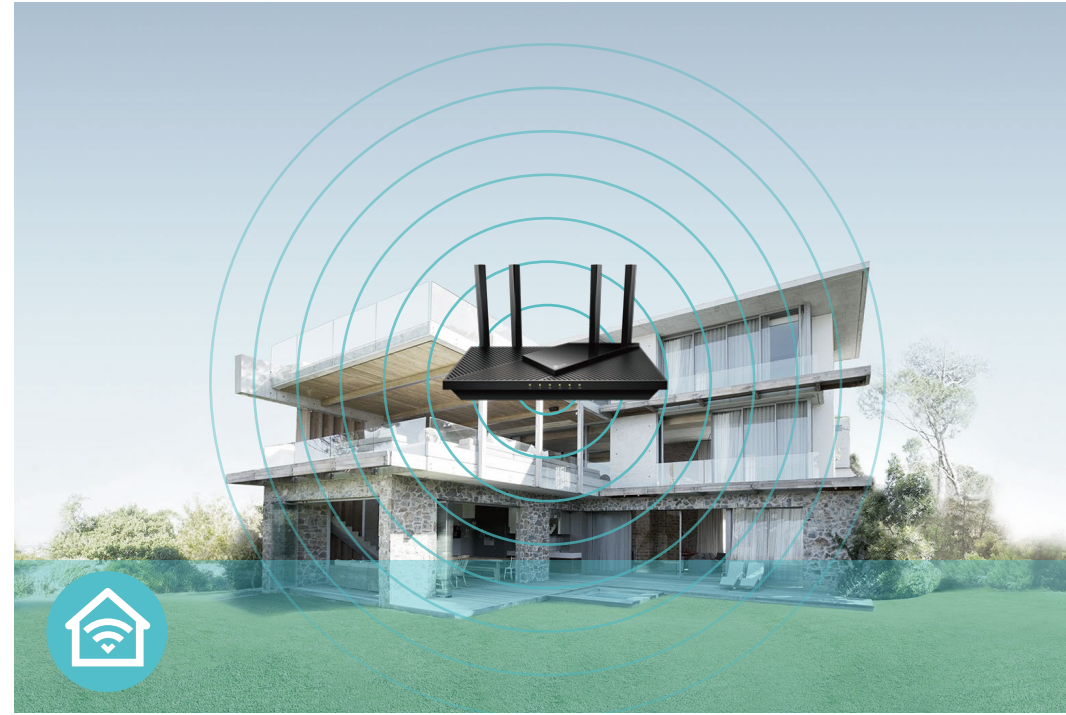


Features



Speed

- Super-Fast Wi-Fi – 3 Gbps Wi-Fi for faster browsing, streaming, and downloading—all at the same time†
- Connect More, Stay Fast – The new Wi-Fi 6 standard reduces congestion and quadruples your average throughput.⁵



Wi-Fi Range

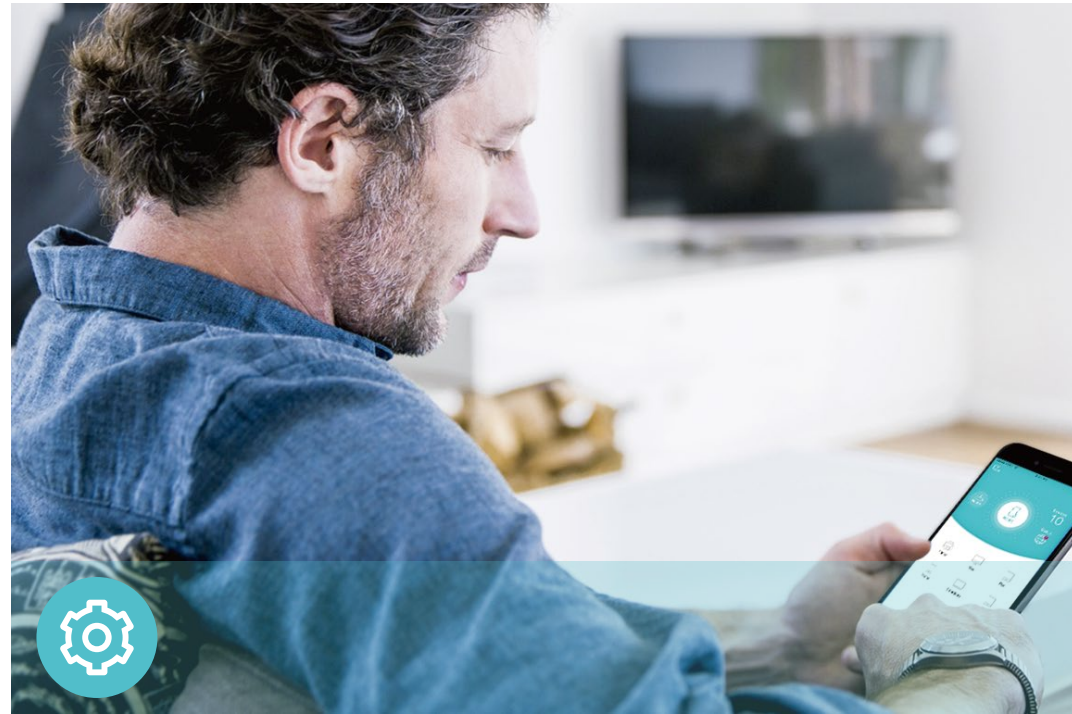
- Ultimate Range Wi-Fi – Four high-gain external antennas deliver a Wi-Fi signal to every corner of your home, making all of your connections more efficient and stable
- Beamforming Technology – Concentrates Wi-Fi signals towards individual devices to ensure stronger connections
- Seamless OneMesh network – Transfer between signals without any drops or lag and manage your whole network using a centralized panel



Reliability

- Secure VPN Access – Connects to a private network with a safe and secure OpenVPN and PPTP VPN connection
- Airtime Fairness – Balances bandwidth of connected devices to improve overall throughput and efficiency
- Smart Connect – Intelligently switches each device's connection to the optimum available Wi-Fi band

Features



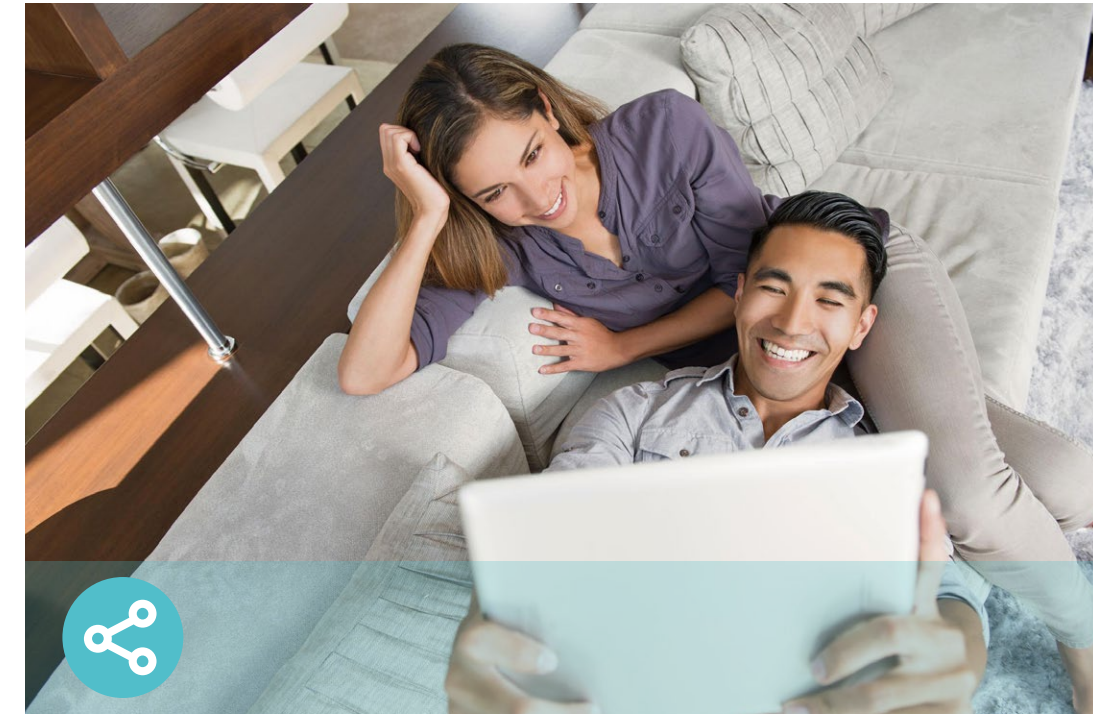
Ease of Use

- Intuitive Web UI – Ensures quick and simple installation without hassle
- WPS (Wi-Fi Protected Setup) – Help you to quickly and securely connect your devices to the router's network with a tap
- Power On/Off – Conveniently power on or off your router as required
- Hassle-free Management with Tether App – Network management is made easy with the TP-Link Tether app, available on any Android and iOS device



Security

- HomeShield – TP-Link's premium security services keep your home network safe with cutting-edge features for network and IoT protection
- Guest Network – Provides separate access for guests to secure the home network
- Access Control – Establishes a whitelist or blacklist to allow or restrict certain devices to access the internet
- Encryptions for Secure Network – WPA/WPA2-Personal, WPA2/WPA3-Personal, WPA/WPA2-Enterprise encryptions provide active protection against security threats



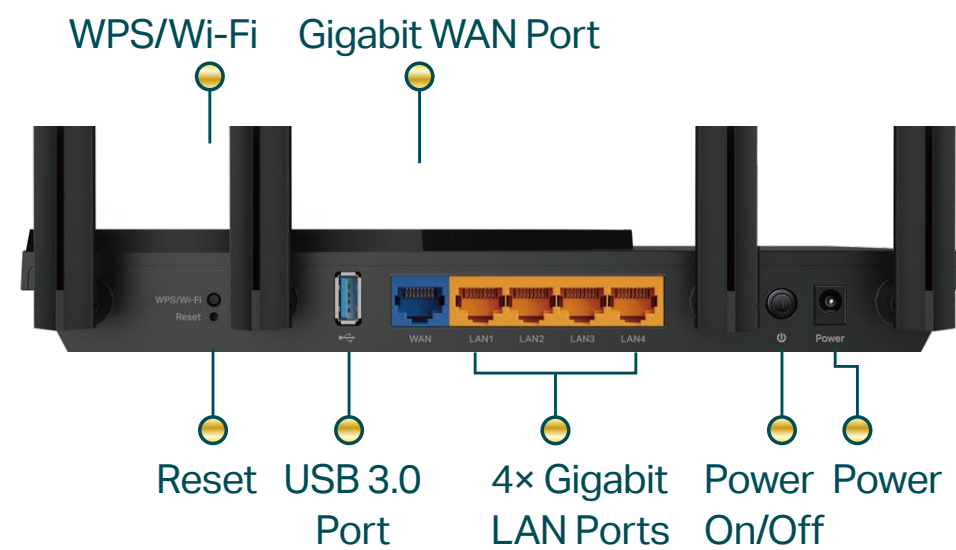
Easy Sharing

- USB Port – Connects external storage devices to rapidly share files, photos, and videos
- Built-in Media Server – Allows you to play music, watch videos and view photos from any device on your network

Specifications

Hardware

- Antennas: 4× High-Performance Antennas
- Ethernet Ports:
1× Gigabit WAN Port + 4 × Gigabit LAN Ports
- USB Ports: 1× USB 3.0 Port
- Dimensions: 10.2 × 5.3 × 1.5 in (261.1 × 134.5 × 41.0 mm)



Wireless

- Wireless: 2402 Mbps (5 GHz) + 574 Mbps (2.4 GHz), compatible with 11a/b/g/n/ac Wi-Fi standards
- Frequency: 2.4 GHz and 5 GHz
- Transmit Power:
CE: <20dBm (2.4GHz); <23dBm (5.15GHz~5.35GHz); <30dBm (5.47GHz~5.725GHz)
FCC: <30dBm (2.4GHz & 5.15GHz~5.25GHz & 5.725GHz~5.825GHz)
- Reception Sensitivity:
2.4GHz:
11ac VHT20_MCS0:-96dBm, 11ac VHT20_MCS8:-74dB
11ac VHT40_MCS0:-94dBm, 11ac VHT40_MCS9:-70dB
11ax HE20_MCS0:-96dBm, 11ax HE20_MCS11:-66dBm
11ax HE40_MCS0:-93dBm, 11ax HE40_MCS11:-63dBm
5GHz:
11ac VHT20_MCS0:-96dBm, 11ac VHT20_MCS8:-75dBm
11ac VHT40_MCS0:-94dBm, 11ac VHT40_MCS9:-70dBm
11ac VHT80_MCS0:-91dBm, 11ac VHT80_MCS9:-67dBm
11ac VHT160_MCS0:-88dBm, 11ac VHT160_MCS9:-63dBm
11ax HE20_MCS0:-96dBm, 11ax HE20_MCS11:-66dBm
11ax HE40_MCS0:-93dBm, 11ax HE40_MCS11:-63dBm
11ax HE80_MCS0:-91dBm, 11ax HE80_MCS11:-61dBm
11ax HE160_MCS0:-87dBm, 11ax HE160_MCS11:-58dBm
- Wireless Function: Enable/Disable Wireless Radio, WMM, Wireless Statistics
- Wireless Security: WPA/WPA2-Personal, WPA2/WPA3-Personal, WPA/WPA2-Enterprise

Specifications

Software

- WAN Type: Dynamic IP/Static IP/PPPoE/PPTP(Dual Access)/L2TP(Dual Access)
- Management: Access Control, Local Management, Remote Management
- DHCP: Server, DHCP Client List, Address Reservation
- NAT Forwarding: Port Forwarding, Port Triggering, UPnP, DMZ
- Dynamic DNS: DynDns, NO-IP, TP-Link
- Access Control: Parental Controls, Local Management Control, Host List, White List, Black List
- Firewall Security: SPI Firewall, IP and MAC Address Binding
- Protocols: IPv4, IPv6
- USB Sharing: Supports Samba(Storage)/FTP Server/Media Server
- Guest Network: 2.4 GHz Guest Network, 5 GHz Guest Network
- VPN Server: OpenVPN, PPTP VPN

Others

- Certification:
FCC, CE, RoHS
- System Requirements:
Internet Explorer 11+, Firefox 12.0+, Chrome 20.0+, Safari 4.0+, or other JavaScript-enabled browser
Cable or DSL Modem (if needed)
Subscription with an internet service provider (for internet access)
- Environment:
Operating Temperature: 0°C~40°C (32°F ~104°F)
Operating Humidity: 10%~90% non-condensing
- Package Contents
Wireless Router Archer AX55
Power Adapter
RJ45 Ethernet Cable
Quick Installation Guide



For more information, please visit

<http://www.tp-link.com/products/details/Archer-AX55.html>

or scan the QR code left

[†]Maximum wireless signal rates are the physical rates derived from IEEE Standard 802.11 specifications. Actual wireless data throughput, wireless coverage, and number of connected devices are not guaranteed and will vary as a result of network conditions, client limitations, and environmental factors, including building materials, obstacles, volume and density of traffic, and client location.

[‡]Use of 802.11ax (Wi-Fi 6) and its features including OFDMA, HE160, and Target Wake Time requires clients support the corresponding features. The 160 MHz bandwidth may be unavailable in the 5 GHz in some regions/countries due to regulatory restrictions. Actual power reduction by Target Wake Time may vary as a result of network conditions, client limitations, and environmental factors.

[§]The 802.11ax white paper defines standardized modifications to both the IEEE 802.11 physical layers (PHY) and the IEEE 802.11 Medium Access Control (MAC) layer as enabling at least one mode of operation capable of supporting improvement of at least four times the average throughput per station (measured at the MAC data service access point) in a dense deployment scenario.

[¶]HomeShield includes the Free Basic Plan. Fees apply for the Pro Plan. Visit tp-link.com/homeshield for more information

^{*}Use of MU-MIMO and/or WPA3 requires clients to also support the corresponding features.

^{**}This router may not support all the mandatory features as ratified in Draft 3.0 of the IEEE 802.11AX specification.

^{***}Further software upgrades for feature availability may be required.

©2021 TP-Link