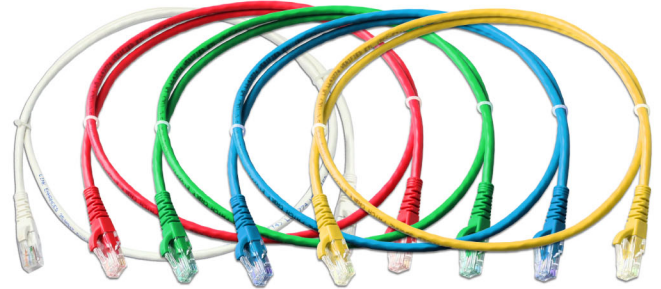


These cables feature all the benefits of professional assembly with manufacture moulding to help them survive the rigors of a desktop environment, LINK offers fully Booted Category 5e (CAT 5E) Patch Cords that will give you years of dependable use these patch cords are nearly impossible to damage! It's a smart and sound investment. All of the colored patch cords are T568B pinning with 100% tested.

SPECIFICATION

Standard	: ANSI/TIA-568-C.2 Category 5e, ISO/IEC 11801:2017 Class D and EN50173-1
Application	: IEEE802.3, 1000Base-T, 10/100Base-TX, 4/16 Token ring, 155/622 and 1.2G ATM, POE, ISDN, VoIP and other
Cable	: Stranded wire flexible UTP Category 5e Cable
Color	: White, Red, Green, Blue, Yellow
Connector	: Category 5e RJ45 modular Plugs with 50 micro-inches Gold Plating over Nickel Plated and Phosphor Bronze
Wire Size	: 24AWG
Slim Boot	: Molding from manufacturer are designed to protect Plugs and Cables
Q.C	: 100% factory assembly and testing
Approvals	: UL Listed E197771 and Intertek Channels Test
Certified	: Lead-free & RoHS Compliant



Ex. US-5003-X : CAT5E RJ45 to RJ45 Patch Cord, CM, 1 meter

Part No.	Description	Length (m.)
US-5003-X	CAT 5E RJ45 to RJ45 PATCH CORD	1
US-5006-X	CAT 5E RJ45 to RJ45 PATCH CORD	2
US-5010-X	CAT 5E RJ45 to RJ45 PATCH CORD	3
US-5015-X	CAT 5E RJ45 to RJ45 PATCH CORD	5
US-5020-X	CAT 5E RJ45 to RJ45 PATCH CORD	10
US-5025-X	CAT 5E RJ45 to RJ45 PATCH CORD	15
US-5030-X	CAT 5E RJ45 to RJ45 PATCH CORD	20

X Color = 1 (White), 2 (Red), 3 (Green), 4 (Blue), 5 (Yellow)

SPECIFICATION

Standard	: ANSI/TIA-568-C.2 Category 5e, ISO/IEC 11801:2017 Class D and EN50173-1
Application	: IEEE802.3, 1000Base-T, 10/100Base-TX, 4/16 Token ring, 155/622 and 1.2G ATM, POE, ISDN, VoIP and other
Cable	: Stranded wire flexible F/UTP Category 5e Cable
Color	: Black
Connector	: Category 5e RJ45 modular Plugs with 50 micro-inches Gold Plating over Nickel Plated and Phosphor Bronze
Wire Size	: 26AWG
Slim Boot	: Molding from manufacturer are designed to protect Plugs and Cables
Q.C	: 100% factory assembly and testing
Approvals	: UL Listed E197771 and Intertek Channels Test
Certified	: Lead-free & RoHS Compliant

Part No.	Description	Length (m.)
US-5003S-X	Shield CAT 5E RJ45 to RJ45 PATCH CORD	1
US-5006S-X	Shield CAT 5E RJ45 to RJ45 PATCH CORD	2
US-5010S-X	Shield CAT 5E RJ45 to RJ45 PATCH CORD	3

X Color = 6 (Black)



Shield CAT5E RJ45 to RJ45 Patch Cord

SPECIFICATION

PERFORMANCE	: ANSI/TIA-568-C.2 Category 5e Channel , ISO/IEC 11801:2017 Class D Channel
Application	: IEEE802.3, 1000Base-T, 10/100Base-TX
Cable	: Stranded wire flexible UTP Category 5e Cable
Color	: Pink
Connector	: Category 5e RJ45 modular Plugs with 50 micro-inches Gold Plating over Nickel Plated and Phosphor Bronze
Wire Size	: 30AWG
Slim Boot	: Molding from manufacturer are designed to protect Plugs and Cables
Q.C	: 100% factory assembly and testing
Certified	: Lead-free & RoHS Compliant

Part No.	Description	Length (m.)
US-5041-X	FLAT CAT 5E RJ45 to RJ45 PATCH CORD	1
US-5042-X	FLAT CAT 5E RJ45 to RJ45 PATCH CORD	2
US-5043-X	FLAT CAT 5E RJ45 to RJ45 PATCH CORD	3
US-5045-X	FLAT CAT 5E RJ45 to RJ45 PATCH CORD	5
US-5050-X	FLAT CAT 5E RJ45 to RJ45 PATCH CORD	10
US-5055-X	FLAT CAT 5E RJ45 to RJ45 PATCH CORD	15

X Color = 7 (Pink)



FLAT CAT5E RJ45 to RJ45 Patch Cord