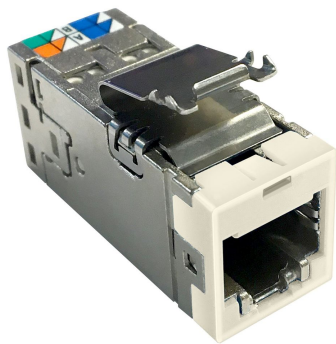


# 2153448-1 | AMP-TWIST SLX, 6S,ALD



AMP-TWIST SLX Series Modular Jack, category 6, shielded , 4 Pair, without dust cover, almond

## Product Classification

Regional Availability	Asia   Australia/New Zealand   EMEA   Latin America
Portfolio	NETCONNECT®
Product Type	Modular jack
Product Series	SLX Series

## General Specifications

ANSI/TIA Category	6
Cable Type	Shielded
Color	Almond
Conductor Type	Solid   Stranded
Mounting	SL Series faceplates and panels
Mounting Note	Color matches with SL-style Almond Faceplates and Surface Mount Boxes
Outlet Type	Standard
Panel Cutout, recommended	14.78 x 20.07 mm (0.58 x 0.79 in)
Termination Tool	SL Termination tool
Termination Type	IDC
Transmission Standards	ANSI/TIA-568-C.2   ISO/IEC 11801 Class E
Wiring	T568A   T568B

## Dimensions

Height	16.13 mm   0.635 in
Width	14.44 mm   0.569 in
Depth	36.8 mm   1.449 in

# 2153448-1 | AMP-TWIST SLX, 6S,ALD

Compatible Cable Diameter, maximum	8.5 mm   0.335 in
Compatible Insulated Conductor Diameter, maximum	1.6 mm   0.063 in
Contact Plating Thickness	1.27 µm
Panel Thickness, recommended	1.6 mm   0.063 in
Compatible Conductor Gauge, solid	26–22 AWG
Compatible Conductor Gauge, stranded	26–24 AWG

## Electrical Specifications

Remote Powering	Fully supports the safe delivery of power over LAN cabling described by IEEE 802.3bt (Type 4) and complies with the unmating under electrical load requirements prescribed by IEC 60512-99-002
-----------------	--

## Material Specifications

Contact Base Material	Beryllium copper
Contact Plating Material	Gold
Material Type	Polycarbonate   Zamak

## Environmental Specifications

Operating Temperature	-10 °C to +60 °C (+14 °F to +140 °F)
Flammability Rating	UL 94 V-0

## Packaging and Weights

Packaging quantity	24
Packaging Type	Bag   Box

## Regulatory Compliance/Certifications

Agency	Classification
CHINA-ROHS	Below maximum concentration value
RCM	Compliant to electrical safety, EMC, EME & telecommunications requirements
REACH-SVHC	Compliant as per SVHC revision on <a href="http://www.commscope.com/ProductCompliance">www.commscope.com/ProductCompliance</a>
ROHS	Compliant

